

Ramada

14/24/28 Series

McMinnville, Oregon



Shown With Optional Exterior

Factory Direct Homes

Phone: (888) 973-2286

www.SkylineFactoryDirectHomes.com

Factory Direct Homes is a licensed DBA of NW Homebuyers.net

Member

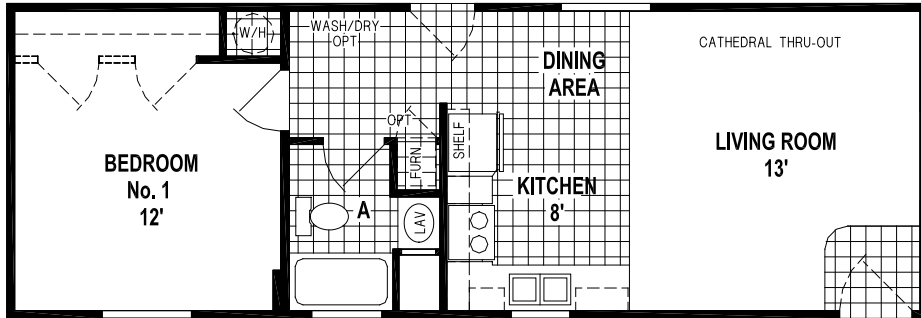


NAHB
NATIONAL ASSOCIATION
OF HOME BUILDERS

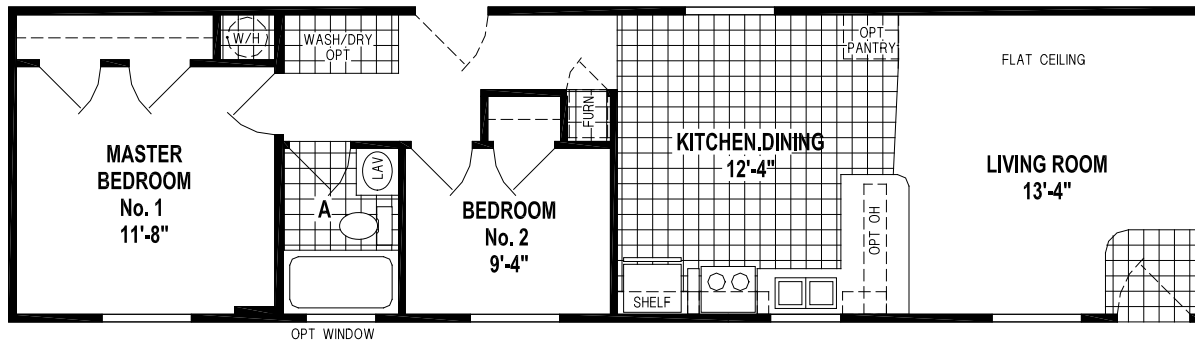


SKYLINE[®]

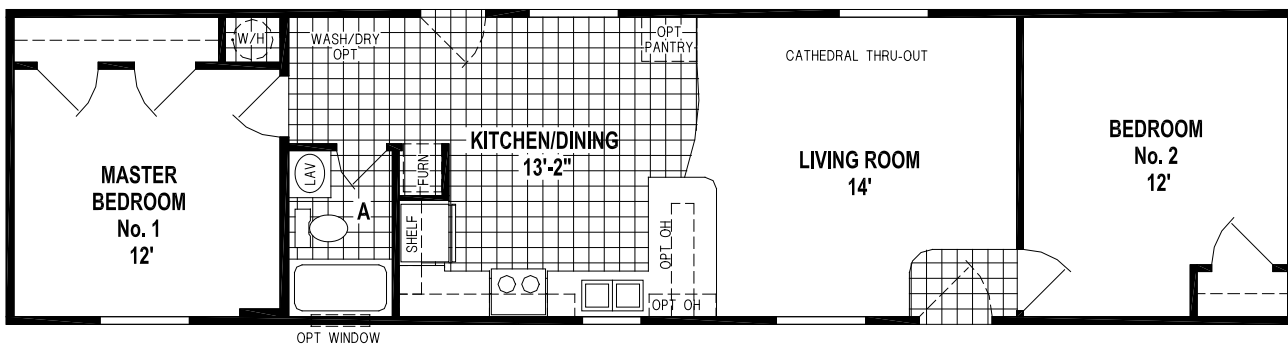
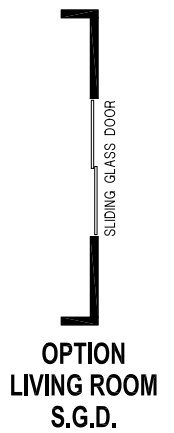
STRENGTH • KNOWLEDGE • TRUST



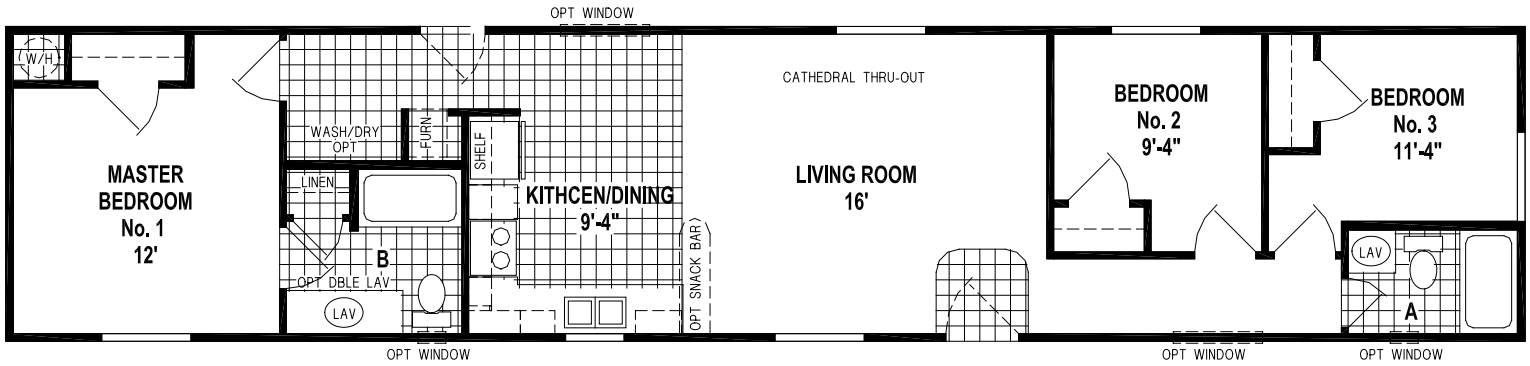
7923CT/4014 (546 SQ. FT.) 1BEDROOM - CATHEDRAL THRU-OUT



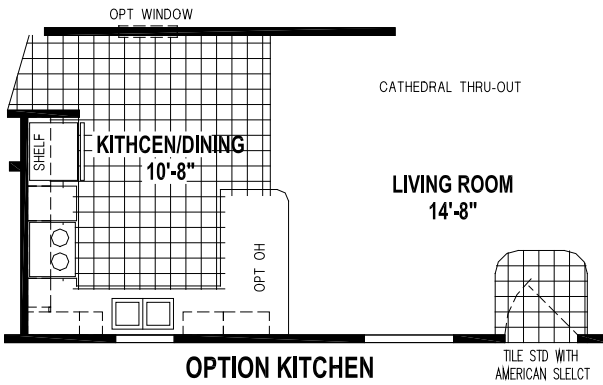
7953CT/5214 (723 SQ. FT.) 2BEDROOM



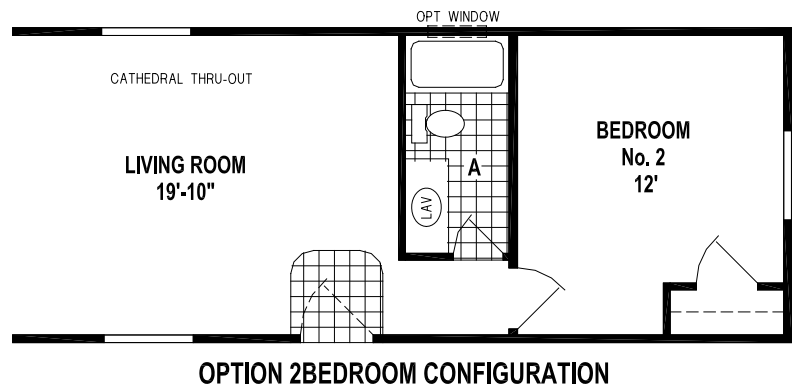
7915CT5614 (765 SQ. FT.) 2BEDROOM - CATHEDRAL THRU-OUT



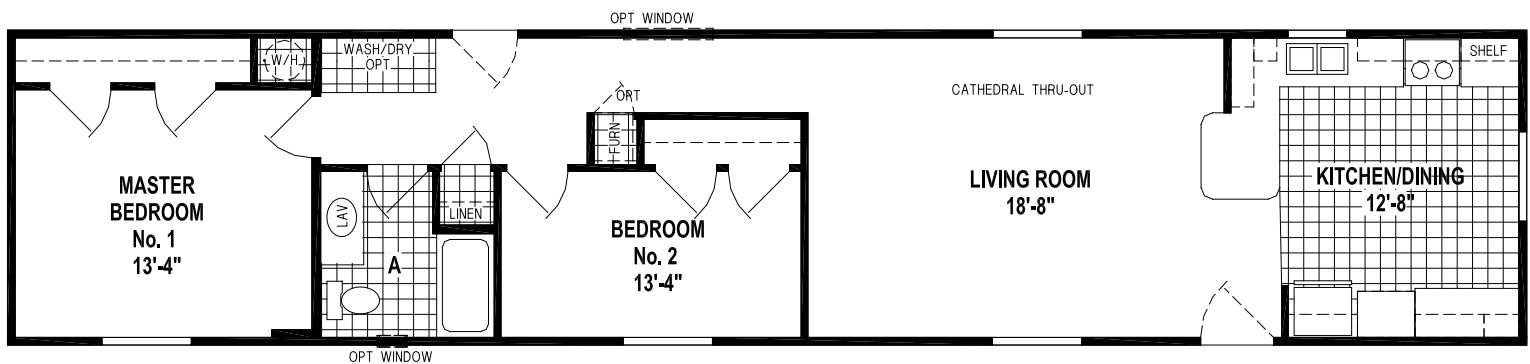
7900CT/6614 (902 SQ. FT.) 3BEDROOM - 2BATHS - CATHEDRAL THRU-OUT



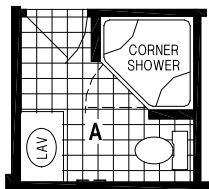
OPTION KITCHEN



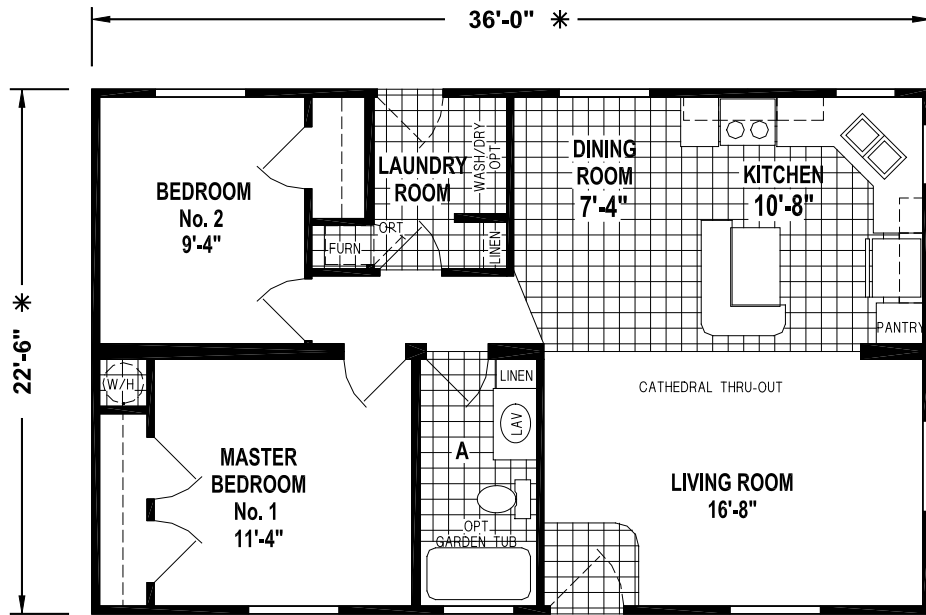
OPTION 2BEDROOM CONFIGURATION



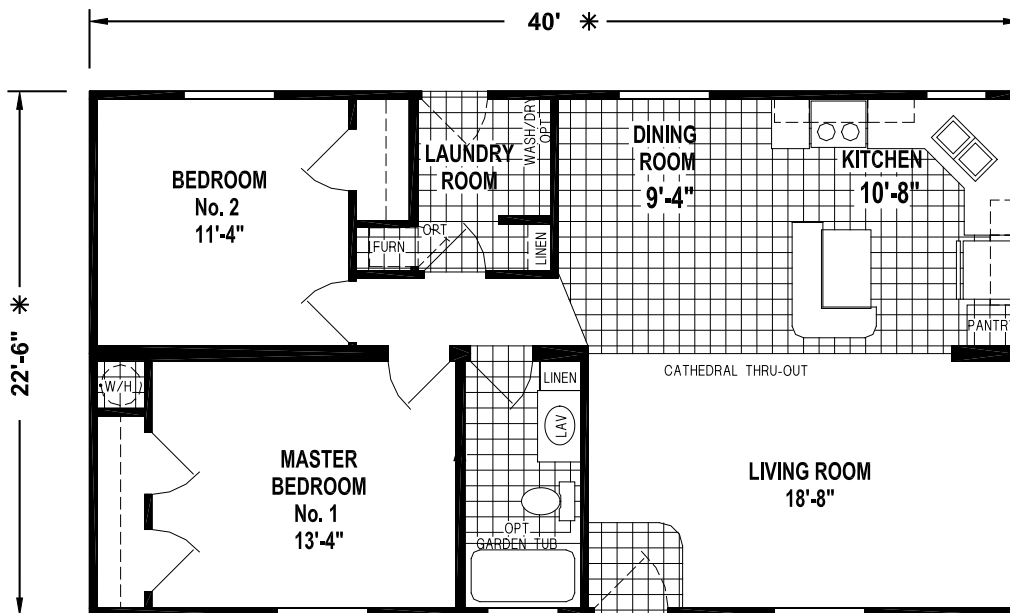
7931CT/6614 (916 SQ. FT.) 2BEDROOM - CATHEDRAL THRU-OUT



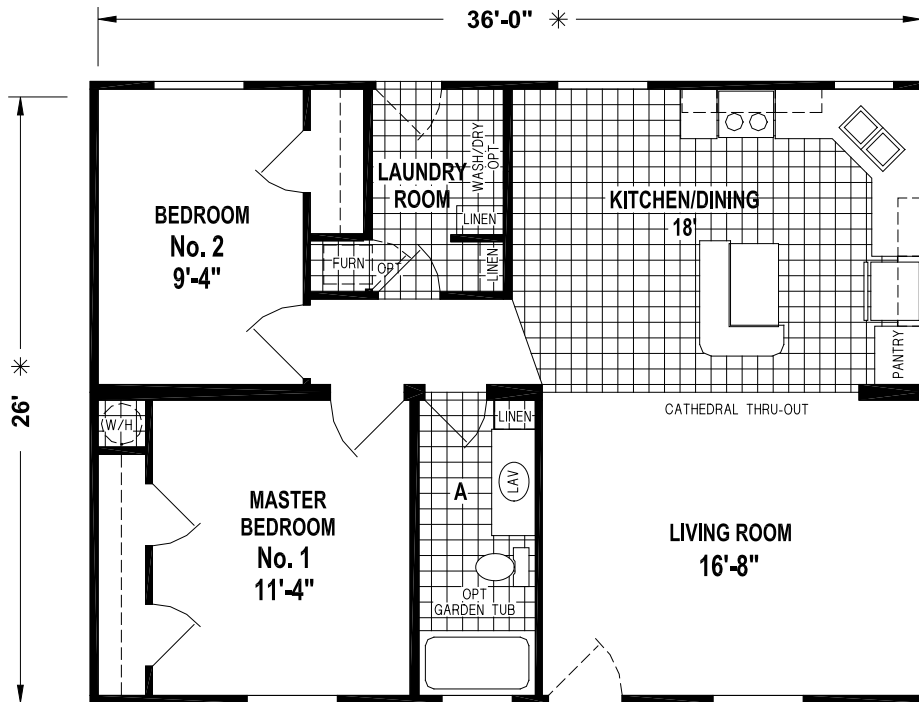
OPTION CORNER SHOWER BATH



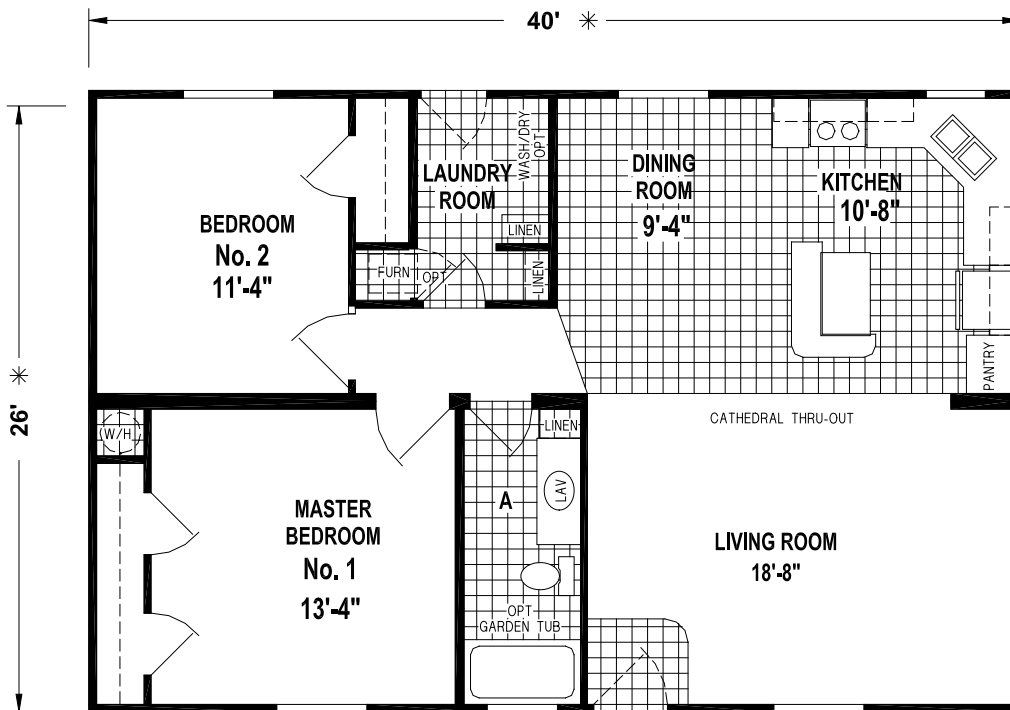
9082CT/3624 (822 SQ. FT) 2BEDROOM CATHEDRAL THRU-OUT



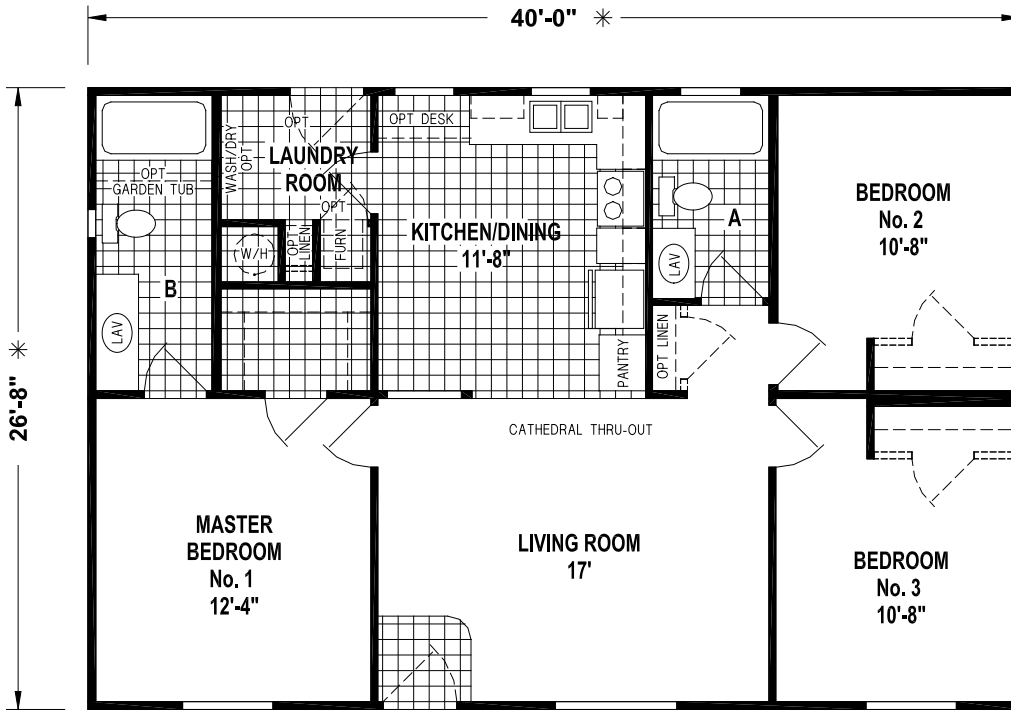
9017CT4024 (913 SQ. FT.) 2BEDROOM CATHEDRAL THRU-OUT



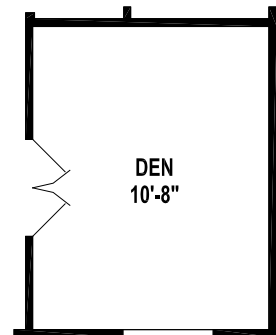
9282CT/3628 (946 SQ. FT.) 2BEDROOM - CATHEDRAL THRU-OUT



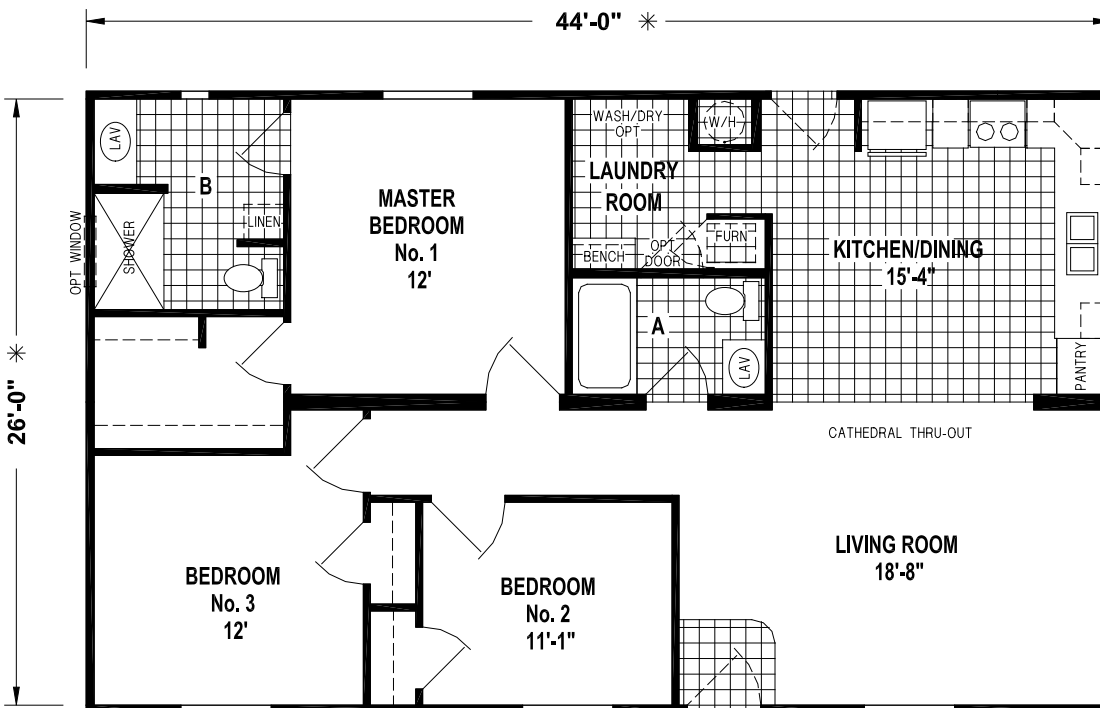
9217CT/4028 (1,050 SQ. FT.) 2BEDROOM - CATHEDRAL THRU-OUT



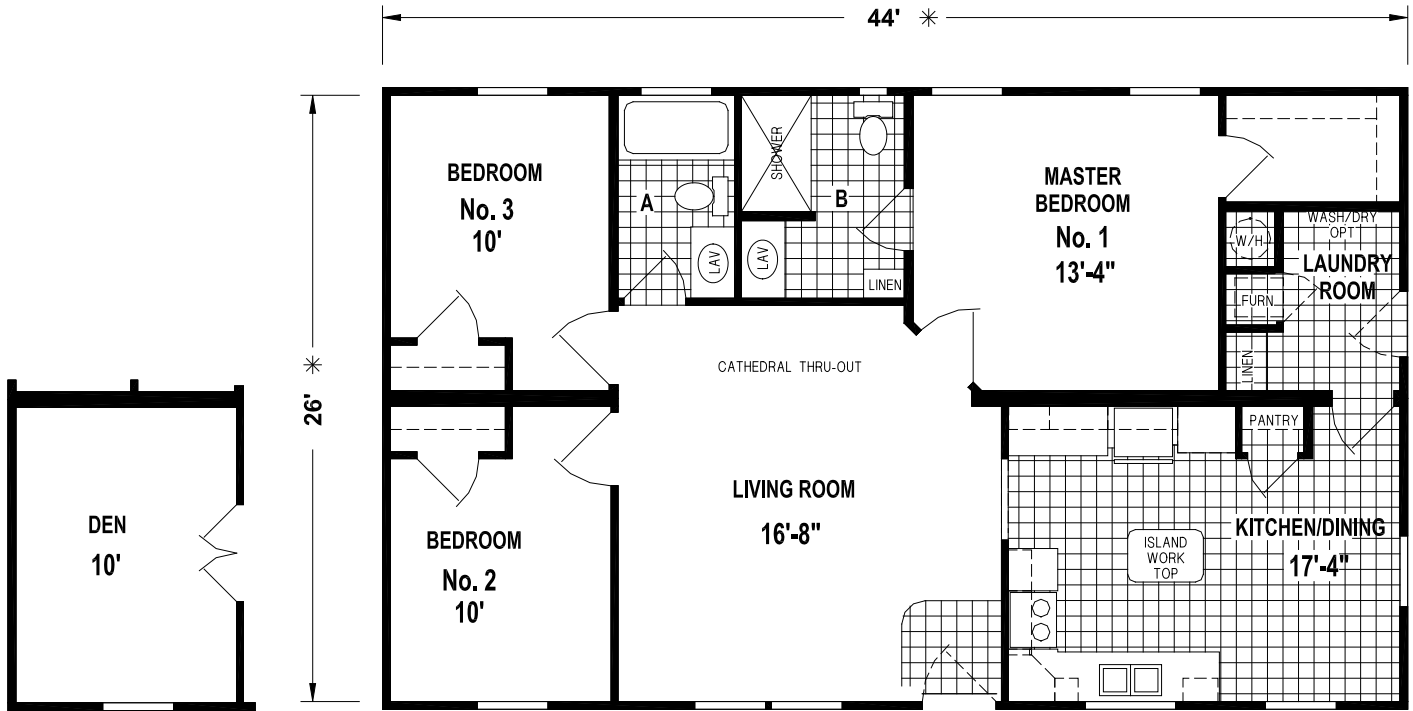
9200CT/4028 (1,066 SQ. FT.) 3BEDROOM - 2BATHS - CATHEDRAL THRU-OUT



OPTION DEN

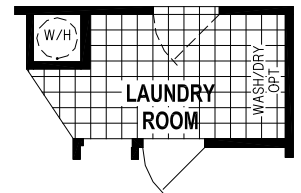


9250CT/4428 (1,144 SQ. FT.) 3BEDROOM - 2BATHS - CATHEDRAL THRU-OUT

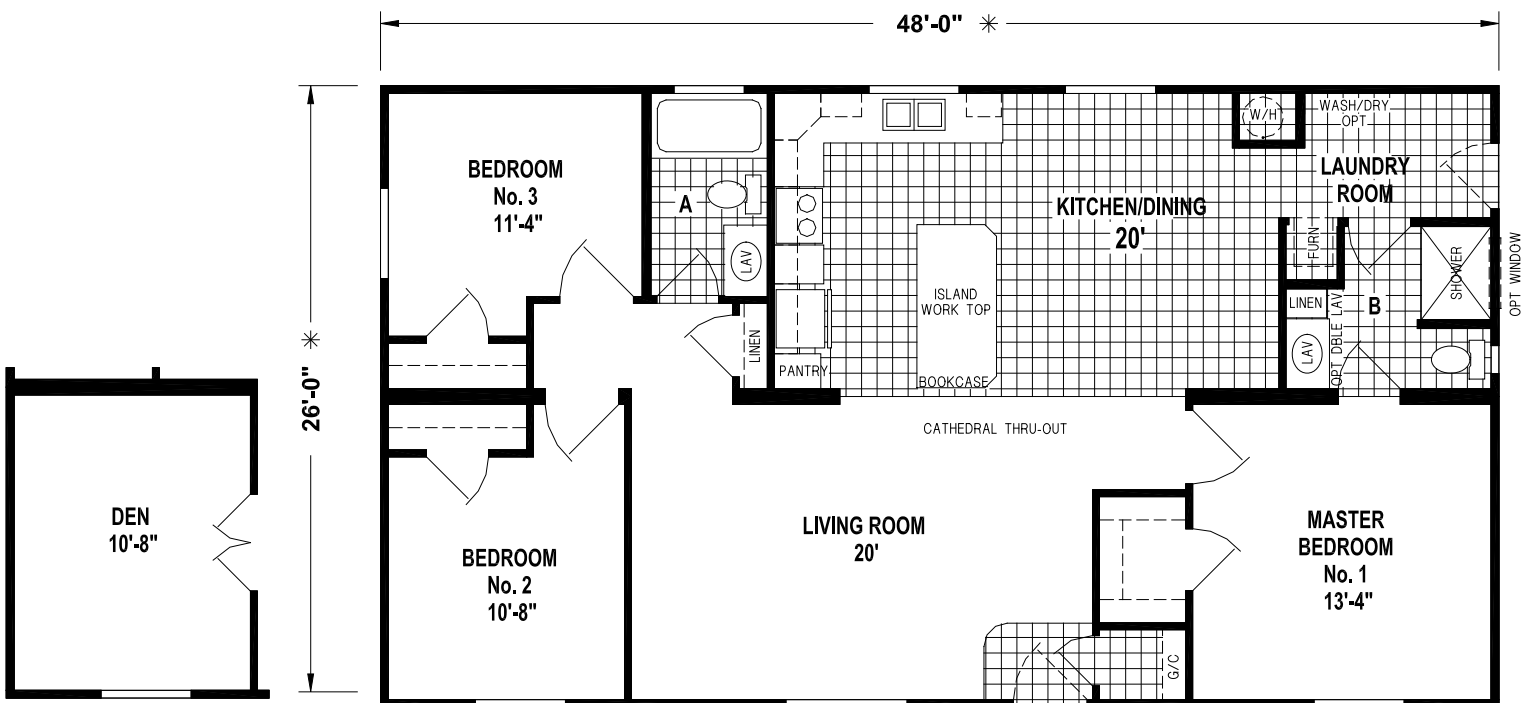


OPTION DEN

9203CT/4428 (1,149 SQ. FT.) 3BEDROOM - 2BATH - CATHEDRAL THRU-OUT

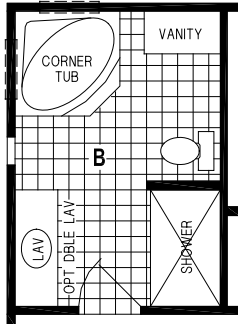


OPTION LAUNDRY ROOM

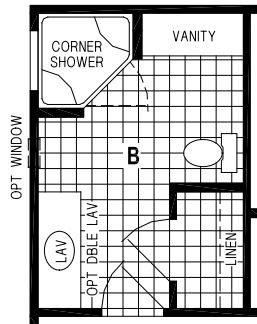


OPTION DEN

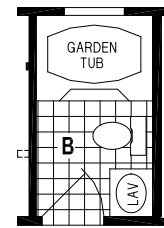
9214CT/4828 (1,248 SQ. FT.) 3BEDROOM - 2BATHS - CATHEDRAL THRU-OUT



OPTION CORNER TUB BATH

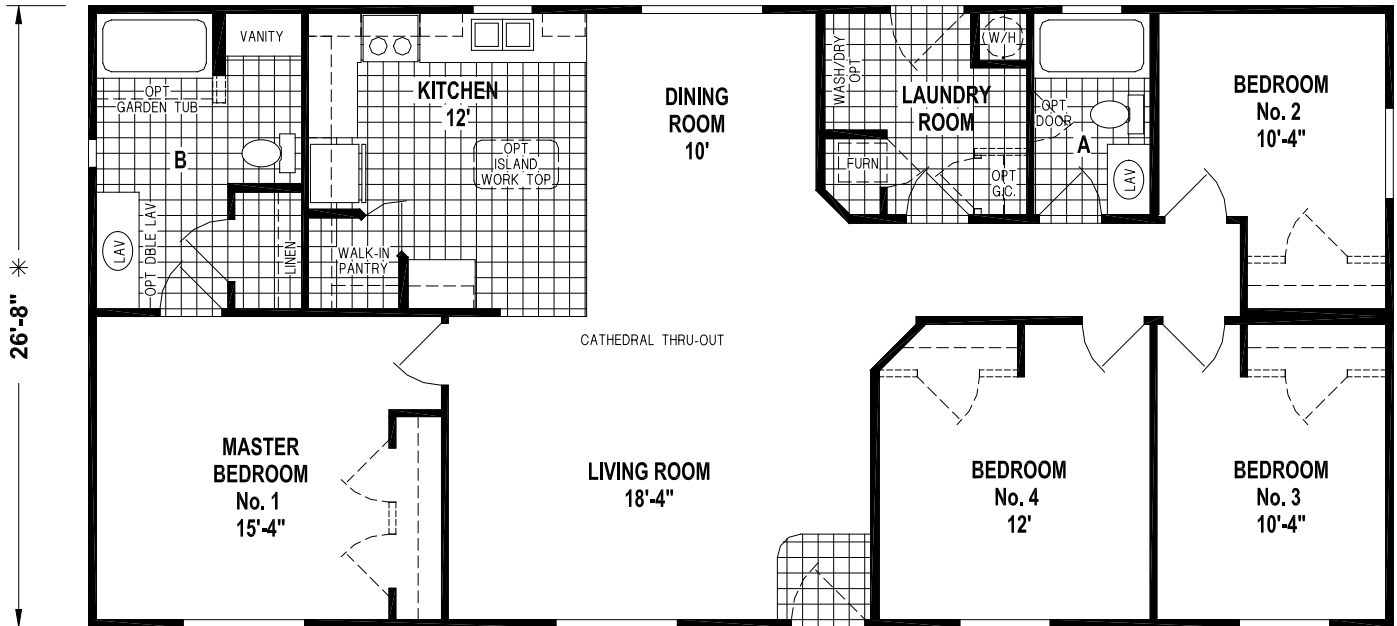


OPTION CORNER SHOWER BATH

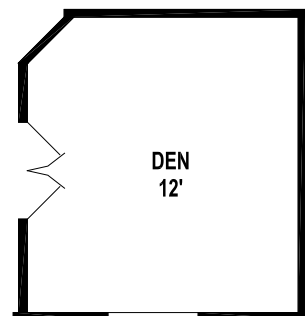


OPTION GARDEN TUB

56'-0" *



9231CT/5628 (1,493 SQ. FT.) 4BEDROOM - 2BATHS - CATHEDRAL THRU-OUT



OPTION DEN

**FULL
WARRANTY**

15

MONTH

**NOT PARTIAL
NOT LIMITED**

SKYLINE®

STRENGTH • KNOWLEDGE • TRUST

Ramada "VALUE"

14/24/28 Series

Standard Features

Construction Features

- 30# Roof Load
- 25 Year Fiberglass Class "A" Fire Rate Shingles
- Nominal 3/12 Roof Pitch
- 12" Eaves on 24 & 28 Wides
- 90" Sidewall Height
- Cathedral Ceilings Throughout
- Detachable Hitches
- 2x4 Sidewalls, 16" O.C.
- 2x6 Floor Joists, 16" O.C.
- Tongue & Groove Floor Decking
- Low "E" Insulated Vinyl Windows
- 36" 6-Panel Fiberglass Front & Rear Doors w/Deadbolts
- James Hardie Fiber Cement Siding
- 6' Accent Dormer over Front Door
- 30 Gal. Electric Water Heater w/Dual Element
- Graduated Fiberglass Heat Ducts
- 200 amp Service
- Electric Furnace
- Plumbing for Washer
- Wire for Dryer
- Wire for Freezer in Specific Models
- Whole House Water Shut-Off at Main
- Copper Wiring
- Smoke Detectors
- Exterior Receptacle w/GFI Breaker
- Exterior Light at All Exterior Doors
- Code Insulation (R-14 Floor, R-11 Walls, R-25 Ceilings)
- Residential PEX Water Lines
- Vентаire IV Attic Fan

Kitchen

- White or Black Whirlpool Appliances
- 18 cu. ft. Frost Free Refrigerator
- 30" Deluxe Range w/Glass, Clock & Timer
- Solid Oak or Mahogany Hardwood Cabinets w/Hidden Hinges
- Fully Extended Drawer System w/Ball Bearing Guides
- 6" Laminate Backsplash w/Laminate Edge
- Stainless Steel Sink w/Single Lever Faucet
- Island Work Top (Specific Models)
- Bank of Drawers

Living Areas

- Complete Tape & Textured Painted Walls
- Choice of Skyline White, Patience, Skyline Tan or Ivorie Custom Paint
- Carpet & Rebond Pad in Bedrooms, Living Room & Hall
- Oak or Mahogany Window Casings & Trim
- White Raised Panel Interior Passage Doors
- Entry Lino
- Oak or Mahogany Base Board in Living Area & Bedrooms

Baths

- 60" Fiberglass Tub / Showers
- 6" Laminate Backsplash w/Laminate Edge
- China Lavy Sinks
- Power Vent Fan w/Light
- Elongated China Commodes
- Oak or Mahogany Cabinets

Compare Our Features and Values to ANYONE!

SKYLINE[®]
STRENGTH • KNOWLEDGE • TRUST

For your comfort and safety, Skyline home designs are approved and inspected for conformance to Federal standards.

* Dimensions stated to industry standards. Width and length dimensions are nominal and are not to be used for setup of home on site; consult selling retailers for exact specifications. Overall length does not include approximately four foot hitch. The square footage is approximate and based upon nominal exterior floor size. Room sizes are measured from floor ends and wall centers.

Because of progressive product improvement, all prices & specifications are subject to change without prior notice or obligation to Skyline Corporation.

Your Retailer, an independent contractor, who is not an agent of Skyline Corporation, is the party responsible for your purchase contract and any additions, deletions, alterations, or attachments made to or in your home.



SKYLINE[®]
STRENGTH • KNOWLEDGE • TRUST

Visit us at our web site at www.skylinecorp.com