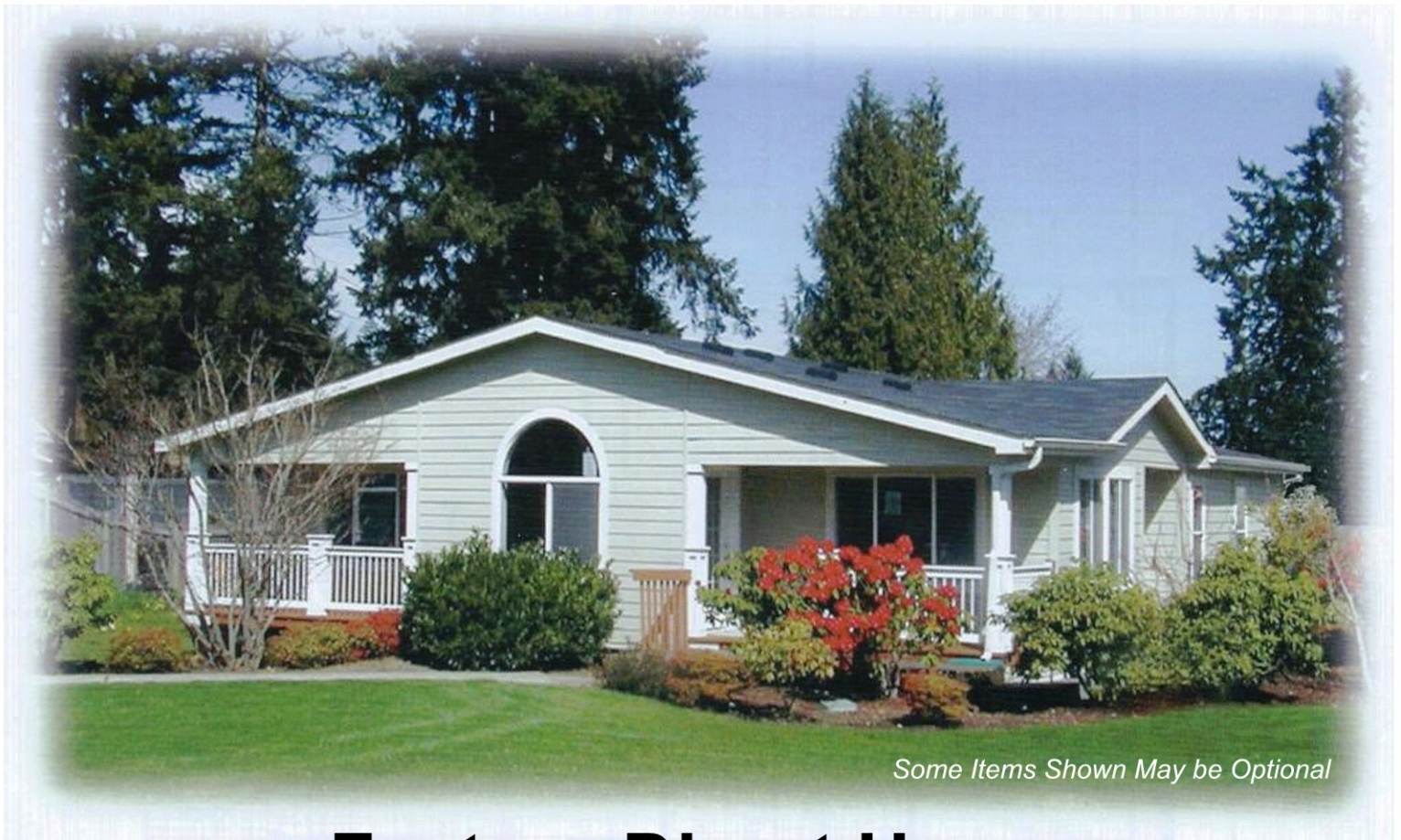


SUNWOOD

28/42 Series

McMinnville, Oregon

Online @ www.FactoryDirectHomes.net



Some Items Shown May be Optional

Factory Direct Homes

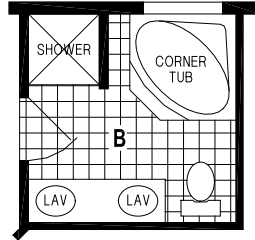
Phone: (888) 973-2286

www.SkylineFactoryDirectHomes.com

Factory Direct Homes is a licensed DBA of NW Homebuyers.net



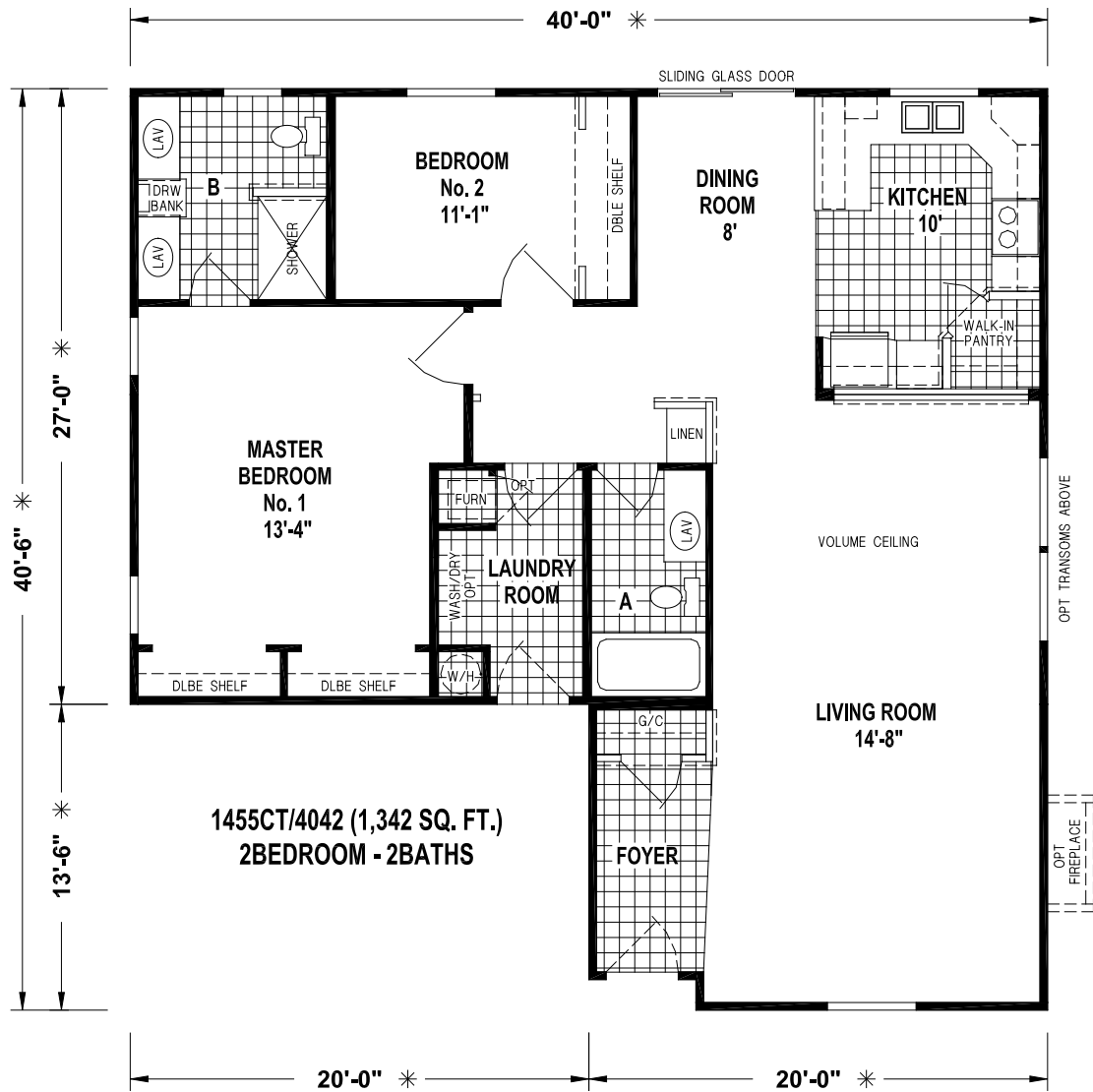
SKYLINE[®]
BRINGING AMERICA HOME. BRINGING AMERICA FUN.

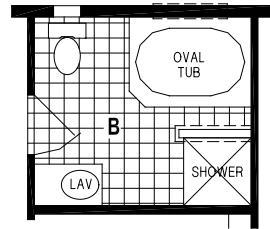


OPTION CORNER TUB BATH

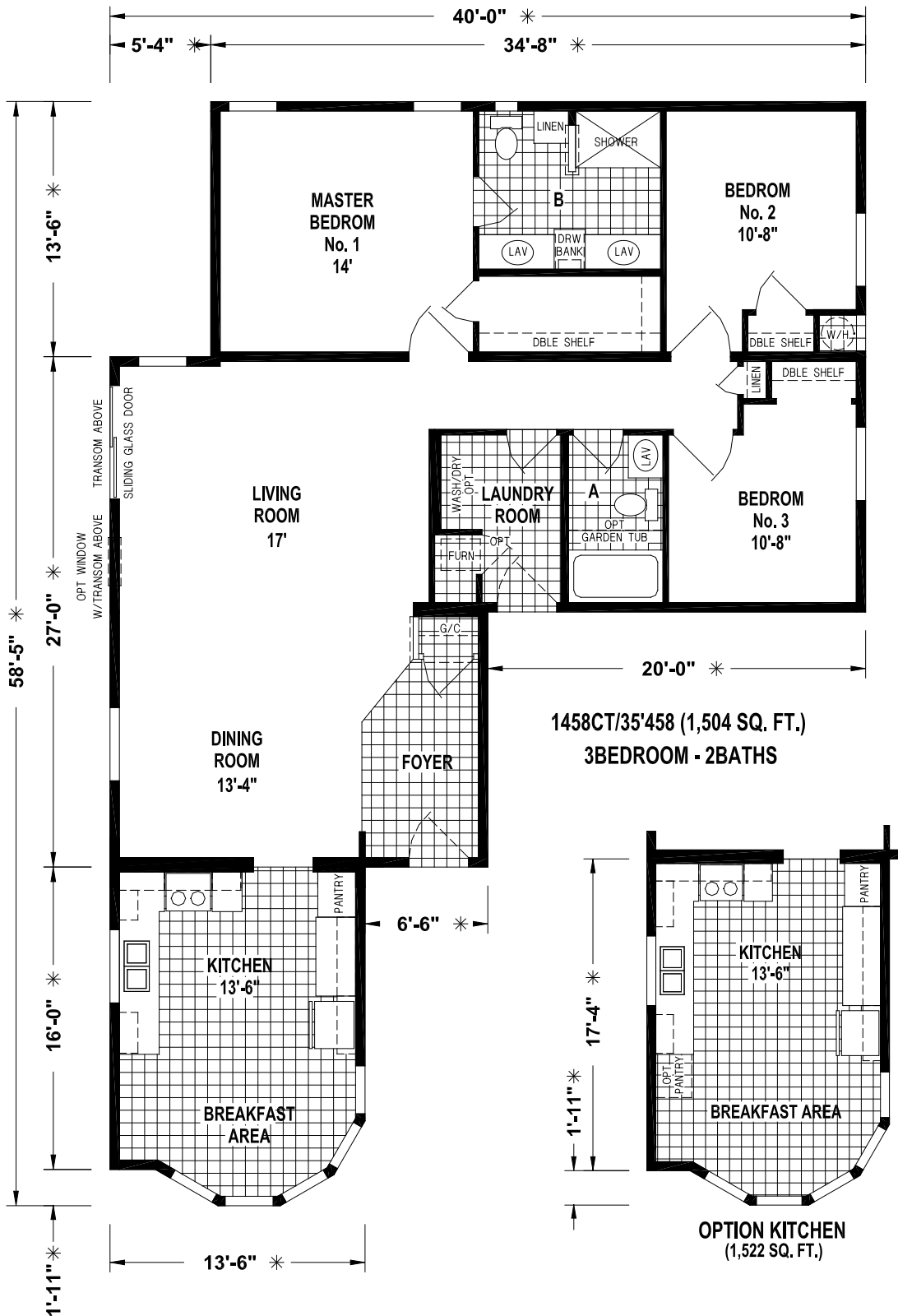


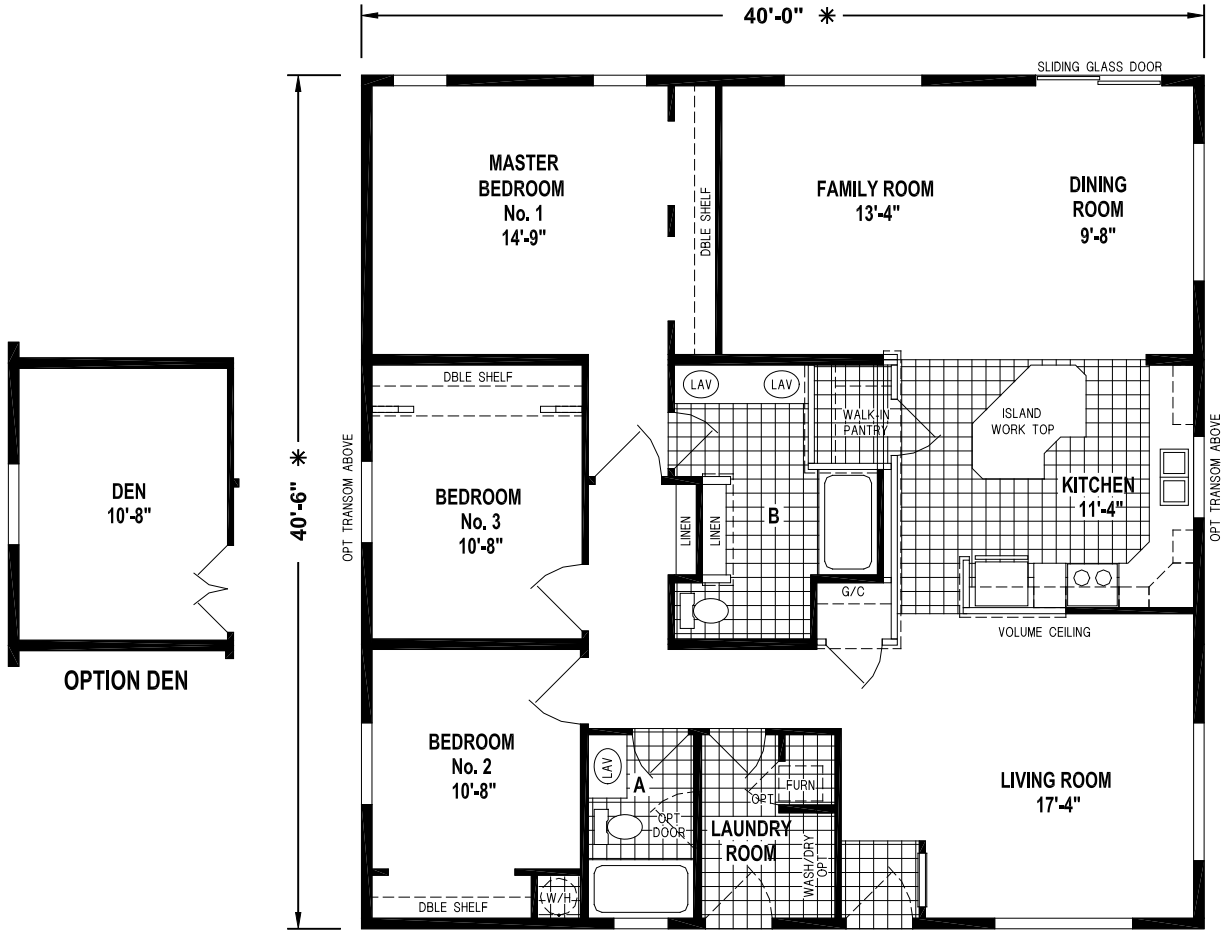
1451CT/5028 (1,322 SQ. FT.) 2BEDROOM - 2BATHS - CATHEDRAL THRU-OUT



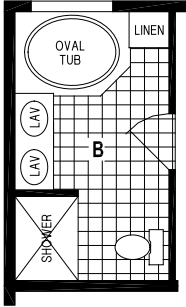


OPTION OVAL TUB BATH

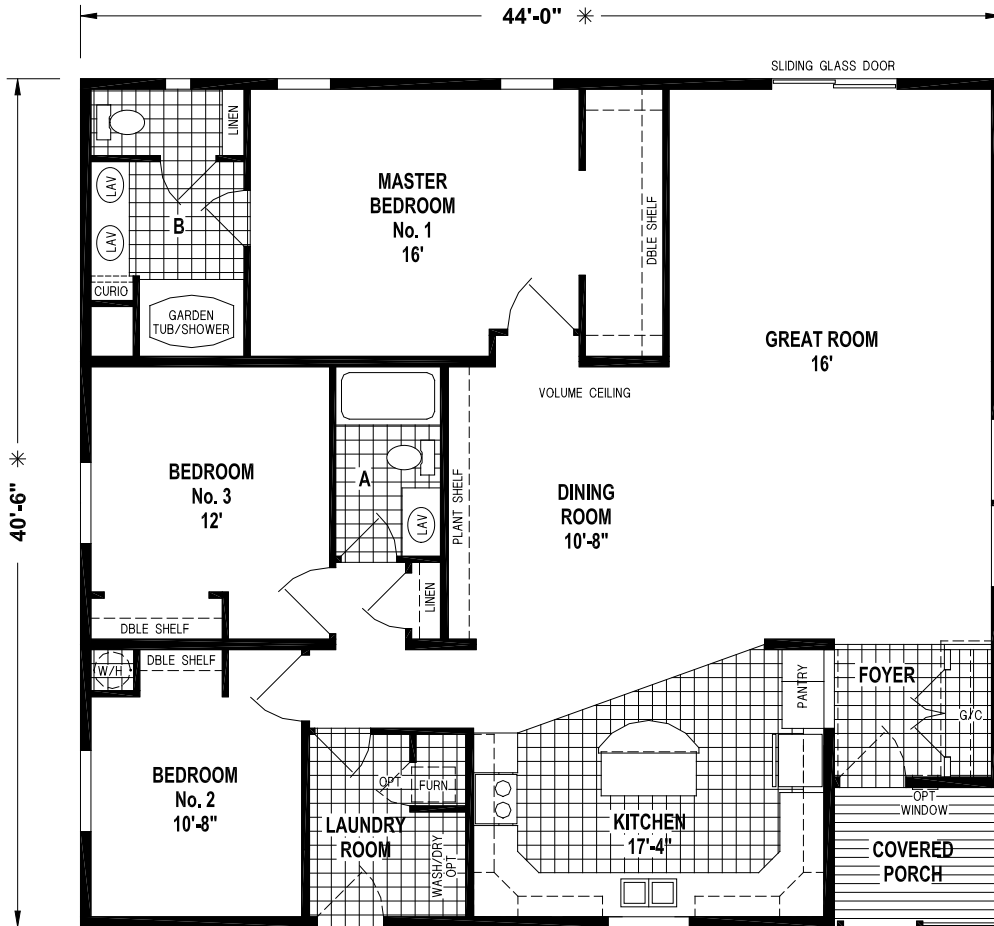




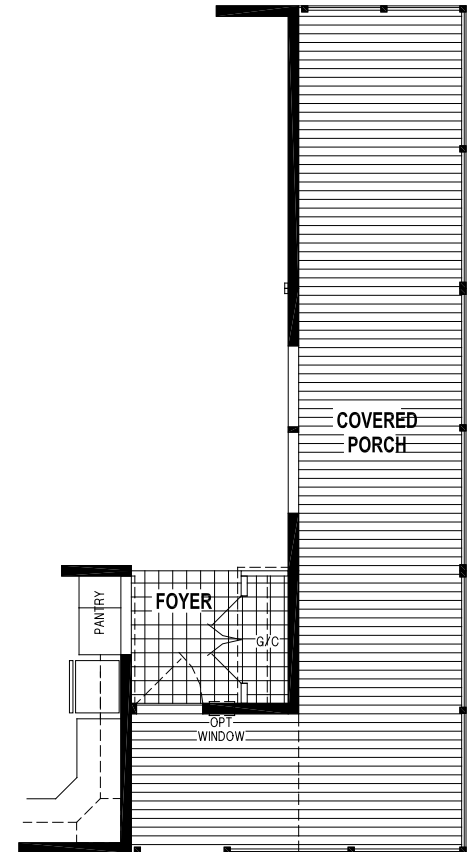
1497CT/4042 (1,620 SQ. FT.) 3BEDROOM - 2BATHS



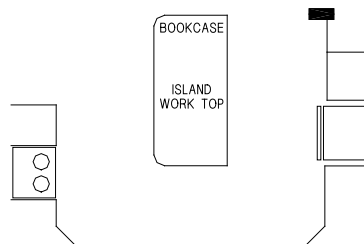
OPTION CORNER OVAL TUB BATH



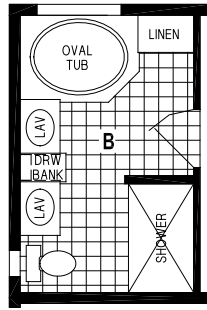
1461CT/4442 (1,728 SQ. FT.) 3BEDROOM - 2BATHS



OPTION COVERED PORCH



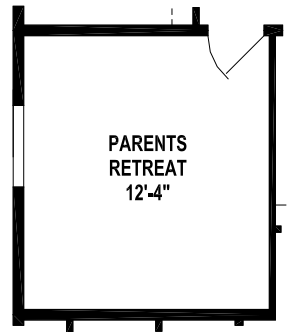
OPTION ISLAND



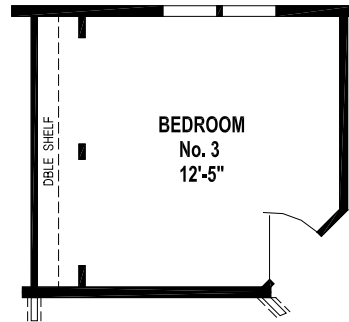
OPTION CORNER OVAL TUB BATH



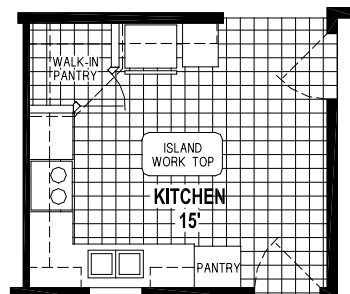
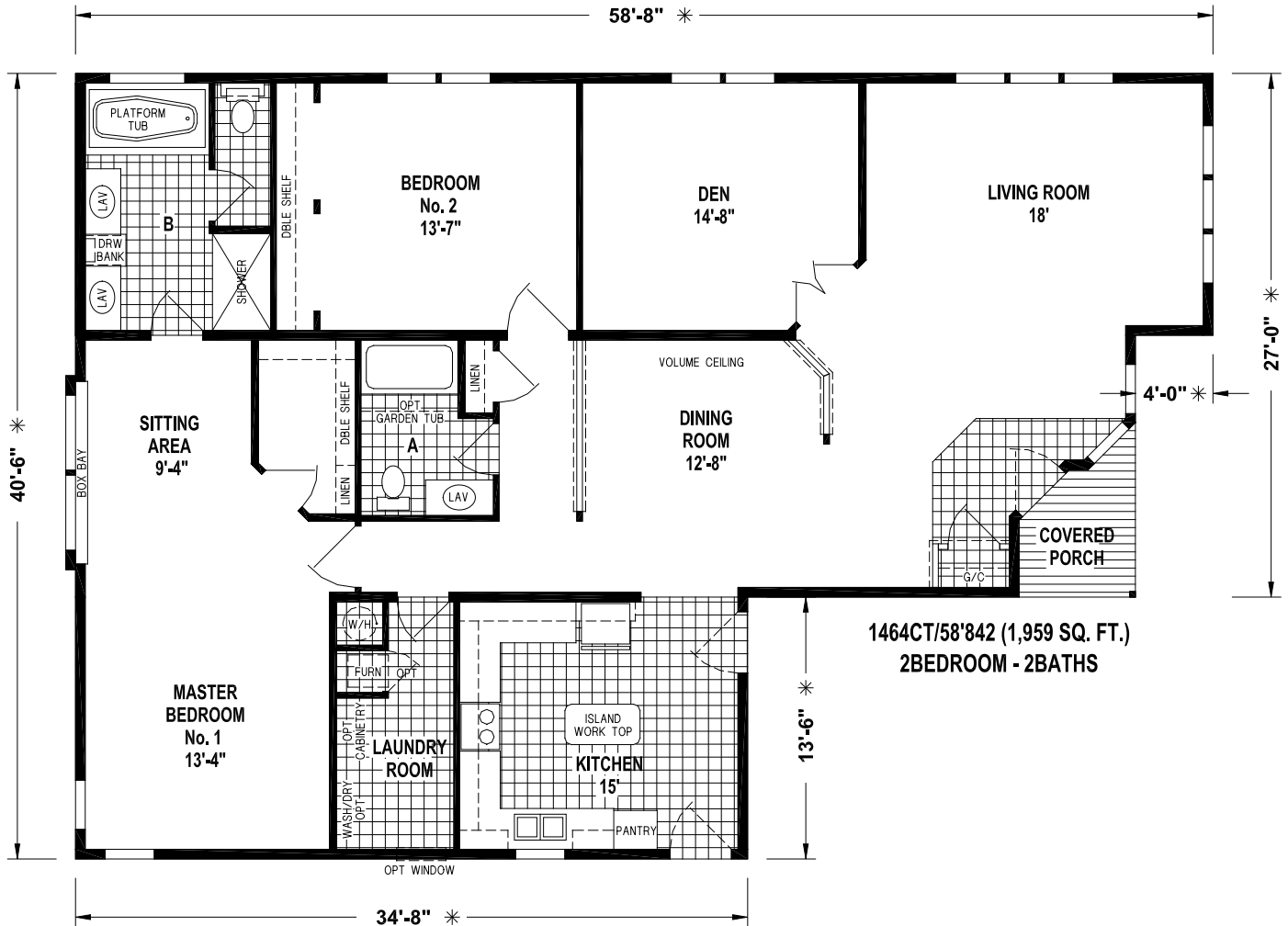
1462CT/45'442 (1,800 SQ. FT.) 3BEDROOM - 2BATHS



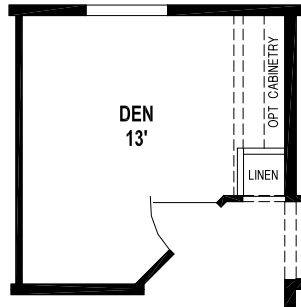
OPTION PARENTS RETREAT



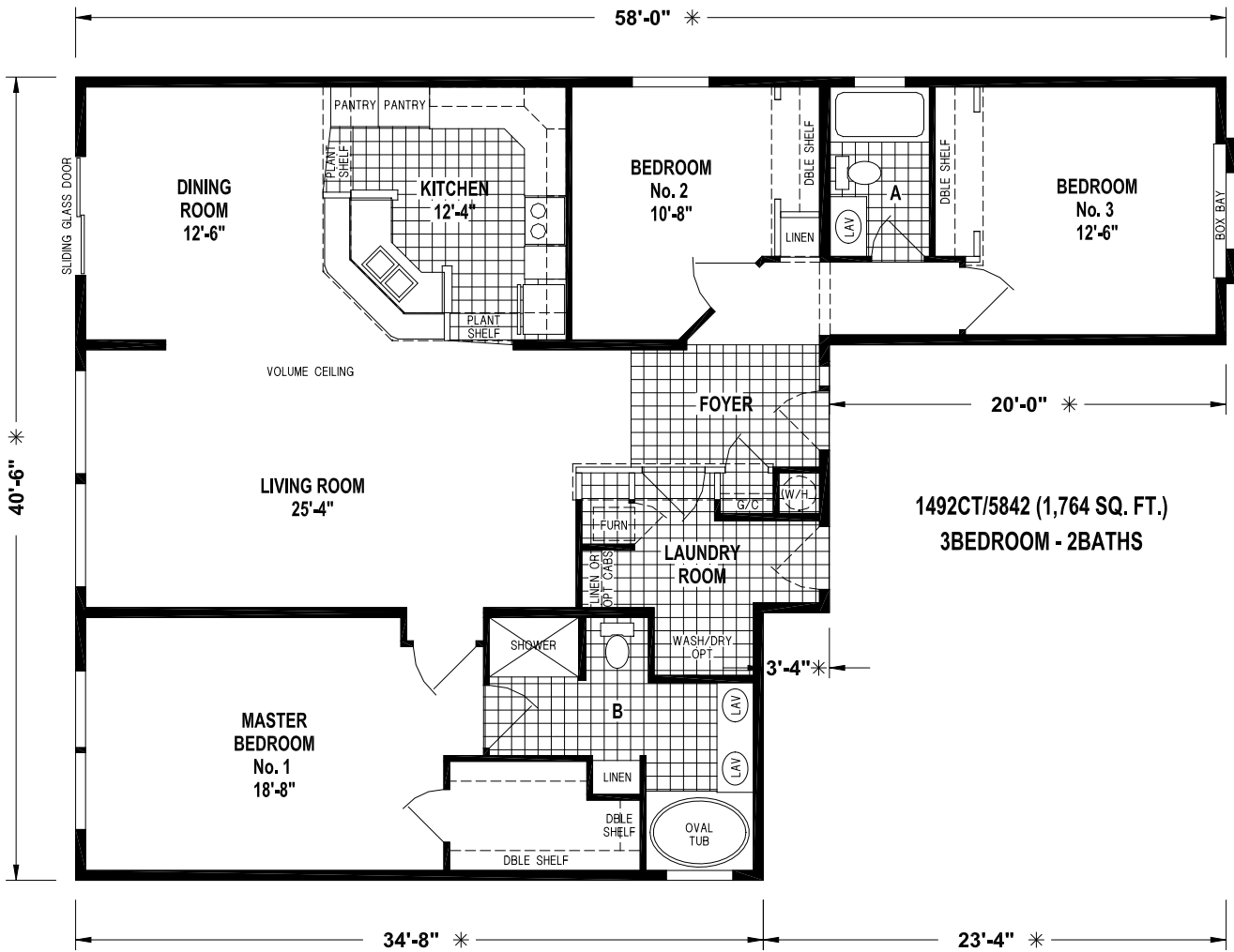
OPTION 3RD BEDROOM



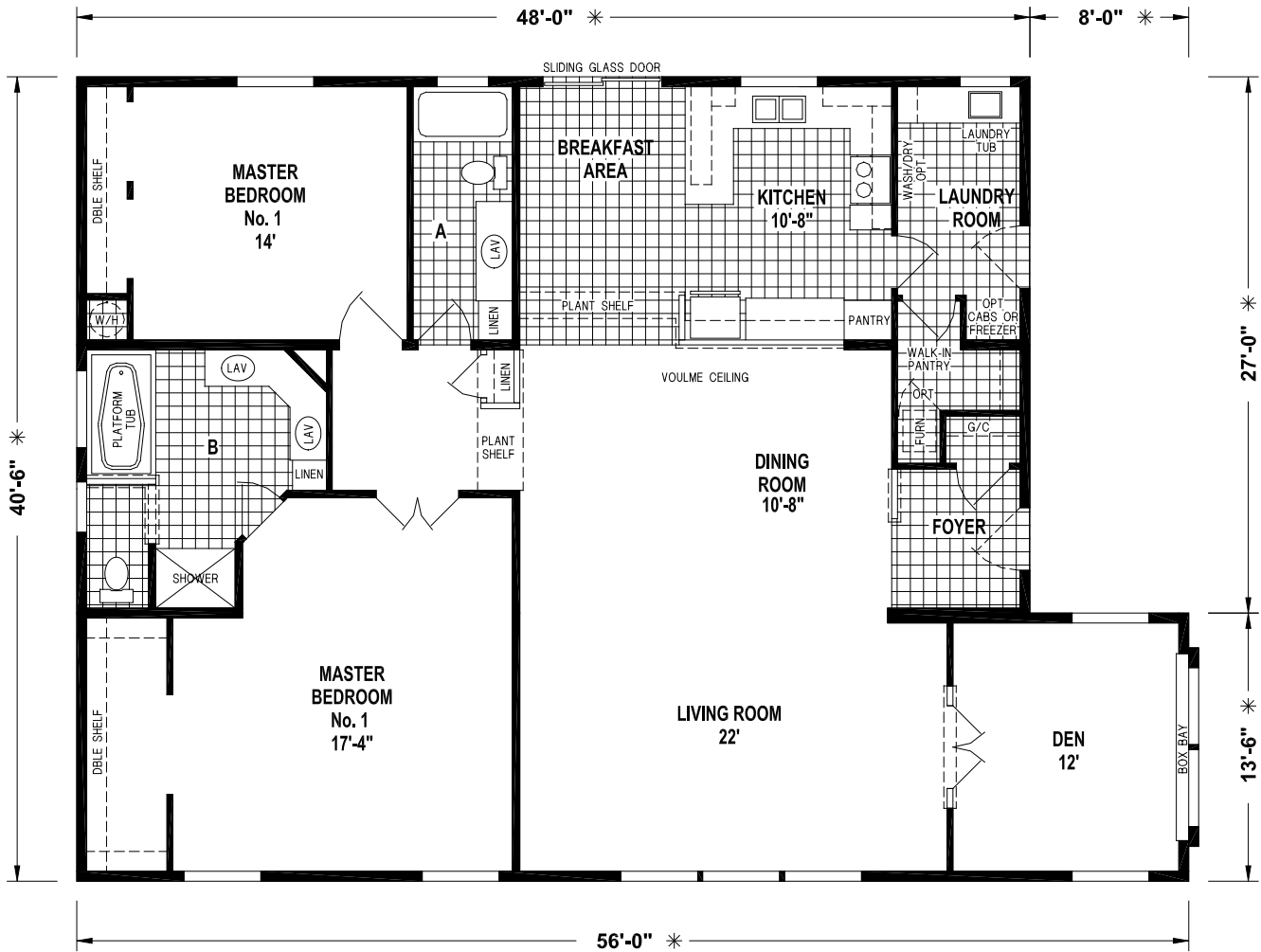
OPTION KITCHEN



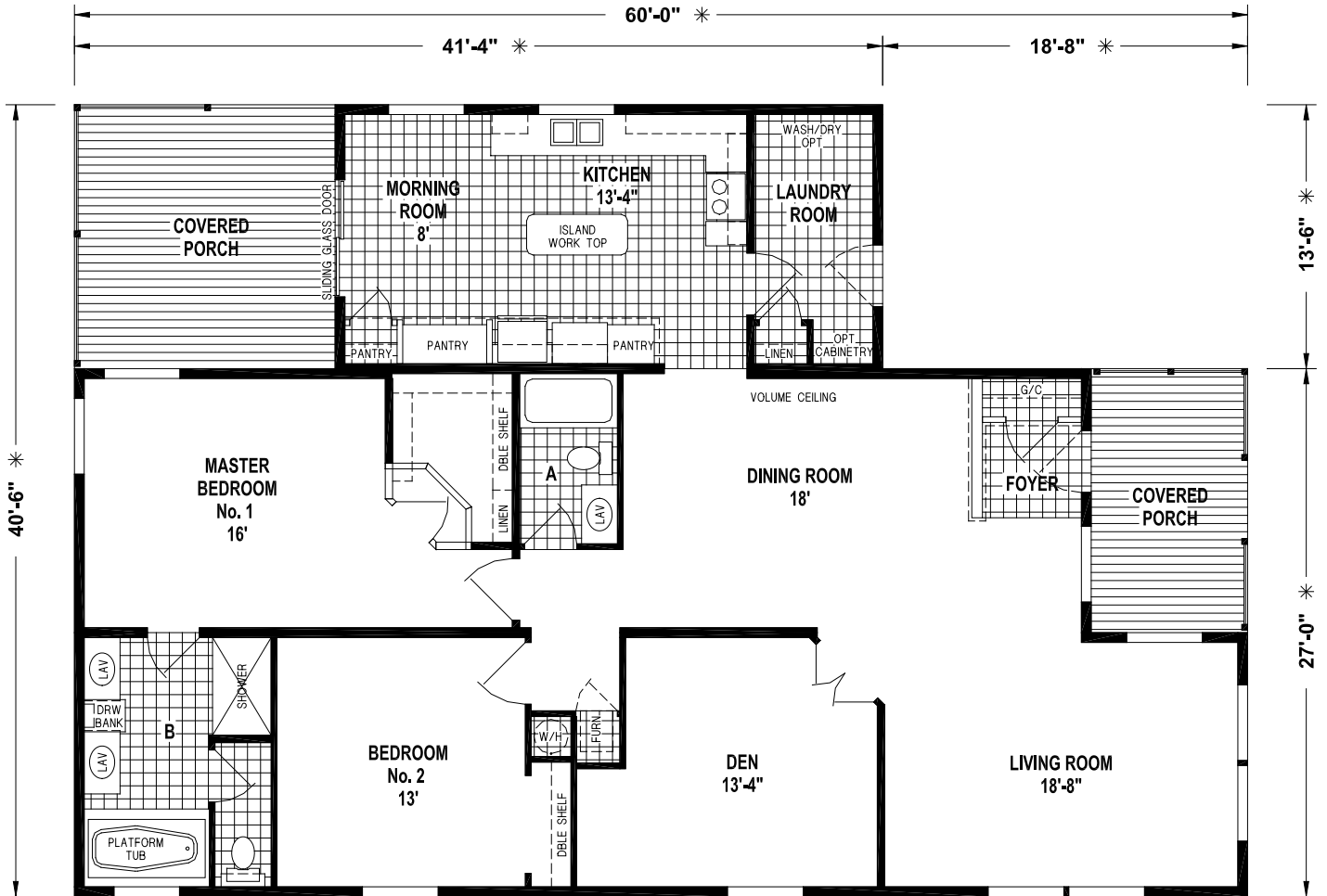
OPTION DEN



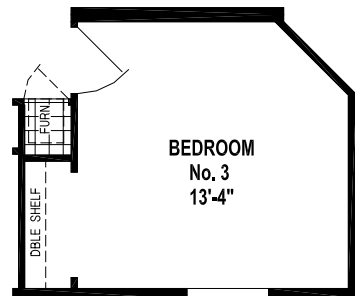
1492CT/5842 (1,764 SQ. FT.)
3BEDROOM - 2BATHS



1463CT/5642 (2,052 SQ. FT.) 2BEDROOM - 2BATHS



1465CT/6042 (1,890 SQ. FT.) 2BEDROOM - 2BATHS



OPTION 3RD BEDROOM

SUNWOOD

28/42 Series

Standard Features

Living Areas

- Your Choice of 3 Interior Paint Colors
- 52" Ceiling Fan w/Light in Living Room
- Faux Wood Mini Blinds
- Shaw Carpet w/Rebond Pad
- Decorative Chandelier in Dining Room

Kitchen

- Your Choice of 4 Natural Hardwood Cabinets (Oak, Ebusu, Mahogany or Knotty Adler)
- Lined Overhead Cabinets w/Adjustable Shelves
- Fully Extended Drawer System w/Ball Bearing Guides
- Residential Hidden Cabinet Door Hinges
- Stainless Steel Appliance Package
- 22 Cu. Ft. Side-by-Side Frost Free Refrigerator w/Water & Ice Dispenser
- 30" Smooth Glass Top Electric Range w/Energy Star Microwave Range Hood
- Energy Star Dishwasher
- (7) Recessed Can Lights
- Stainless Steel Sink w/Single Lever Faucet & Sprayer
- Full Height (19") Mosaic Glass Tile Backsplash to Cabinets
- Plumb for Ice Maker

Bathrooms

- Your Choice of 4 Natural Hardwood Cabinets (Oak, Ebusu, Mahogany or Knotty Adler)
- Natural Hardwood Trimmed Mirrors w/Tulip Lights
- 60" Fiberglass Tub/Shower Combo in Hall Bath — per Floor Plan
- Single Lever Faucet at Sink
- Single Lever Tub/Shower Faucet
- Residential Hidden Cabinet Door Hinges
- Power Vent Fan w/Light
- Elongated China Commodes
- China Lav Sinks
- Residential Height Bathroom Counter Tops

Bedrooms

- Shaw Carpet w/Rebond Pad
- Overhead Lights w/Separate Switch
- Double Wood Shelves w/Rods in Closets
- 36" Interior Doors w/Lever Handles
- Faux Wood Blinds

Additional Features

- Cemplank Lap Siding
- 30-Year Architectural Shingles (Fiberglass—Class A Fire Rated) Choice of Colors
- Vaulted Ceilings Throughout
- Residential Finished Drywall Throughout
- Upgrade Moulding Package (Doors, Windows & Baseboards)
- 6-Panel Interior Doors w/Lever Handles
- Mortised Hinges Throughout
- Linoleum Floor at Entry
- Electric Forced Air Furnace
- Insulated Fiberglass Heat Ducts
- Perimeter Heating System Throughout w/ Toe-Kick Registers in Kitchen & Bathrooms
- 40 Gal. Electric Water Heater (Dual Element)
- Whole House Water Shut-off Valve
- Residential PEX Waterlines
- (2) Exterior Frost Free Faucets
- Plumb for Washer; Wire for Dryer
- Wire for Freezer per Floor Plan
- 36" 6 Panel In-Swing Fiberglass Front Door w/ Deadbolt
- 6 Panel In-Swing 9-Lite Rear Door w/Deadbolt
- Energy Star Rated Low "E" Vinyl Windows
- 4" Tru Wood Trim All Around Windows
- Tongue & Groove OSB Decking
- 200 Amp Service Entrance
- 2 x 6 Sidewalls, 16" O.C.
- 30# Roof Load
- Exterior Receptacle w/GFI Breaker
- Code Insulation (R-14 Floor, R-19 Walls & R-25 Ceiling) The Higher the "R-Value" the Greater the Insulating Power
- Overhead Cabinet above Washer/Dryer Area



SKYLINE[®]

BRINGING AMERICA HOME. BRINGING AMERICA FUN.

Visit us at our web site at www.skylinecorp.com

**Compare Our Features
and Value to ANYONE!**



For your comfort and safety, Skyline home designs are approved and inspected for conformance to Federal standards.

* Dimensions stated to industry standards. Width and length dimensions are nominal and are not to be used for setup of home on site; consult selling retailers for exact specifications. Overall length does not include approximately four foot hitch. The square footage is approximate and based upon nominal exterior floor size. Room sizes are measured from floor ends and wall centers.

Because of progressive product improvement, all prices & specifications are subject to change without prior notice or obligation to Skyline Corporation.

Your Retailer, an independent contractor, who is not an agent of Skyline Corporation, is the party responsible for your purchase contract and any additions, deletions, alterations, or attachments made to or in your home.