

West Ridge

20/24/28/32 Series

McMinnville, Oregon



Factory Direct Homes

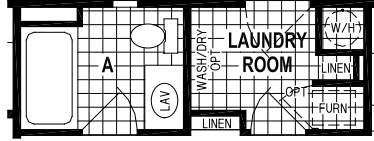
Phone: (888) 973-2286

www.SkylineFactoryDirectHomes.com

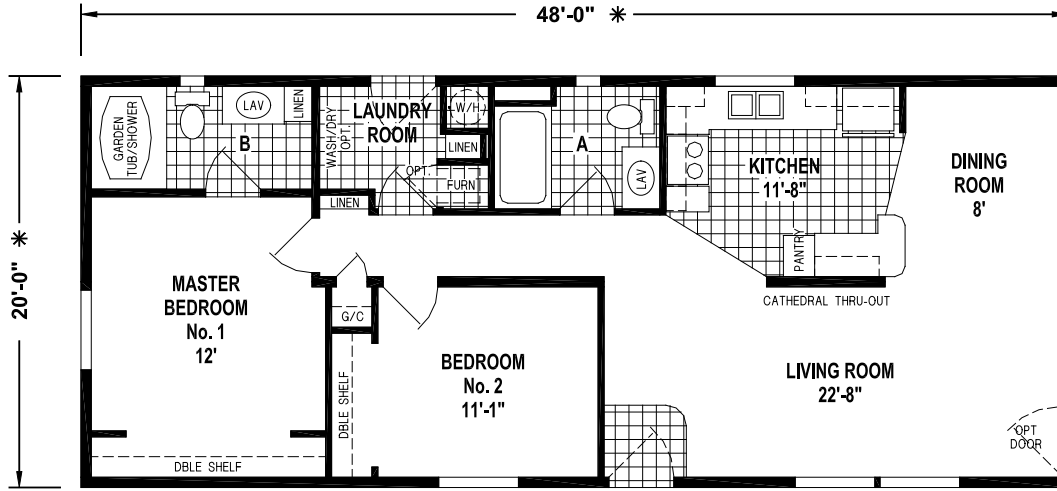
Factory Direct Homes is a licensed DBA of NW Homebuyers.net



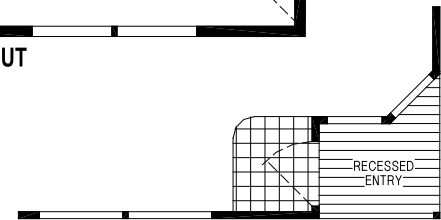
West Ridge 20 Series



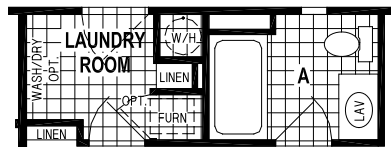
ALTERNATE LAUNDRY ROOM/HALL BATH



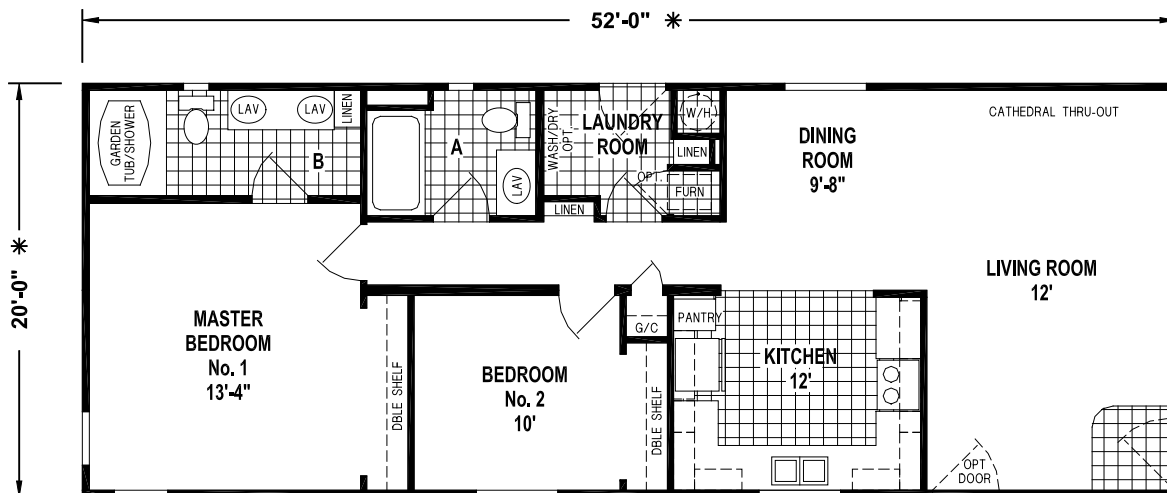
E304CT/4820(960 SQ. FT.) 2BEDROOM - 2BATHS - CATHEDRAL THRU-OUT



OPTION RECESSED ENTRY

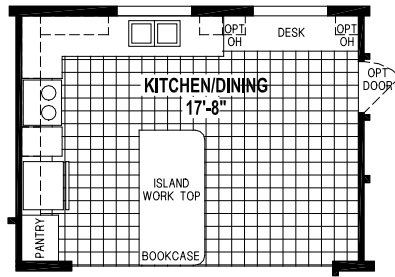


ALTERNATE LAUNDRY ROOM/HALL BATH

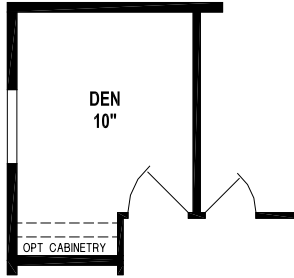


E303CT/5220(1,040 SQ. FT.) 2BEDROOM - 2BATHS - CATHEDRAL THRU-OUT

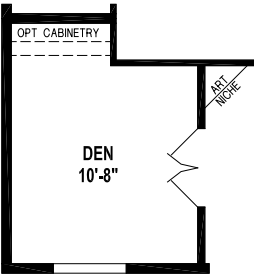
West Ridge 28 Series



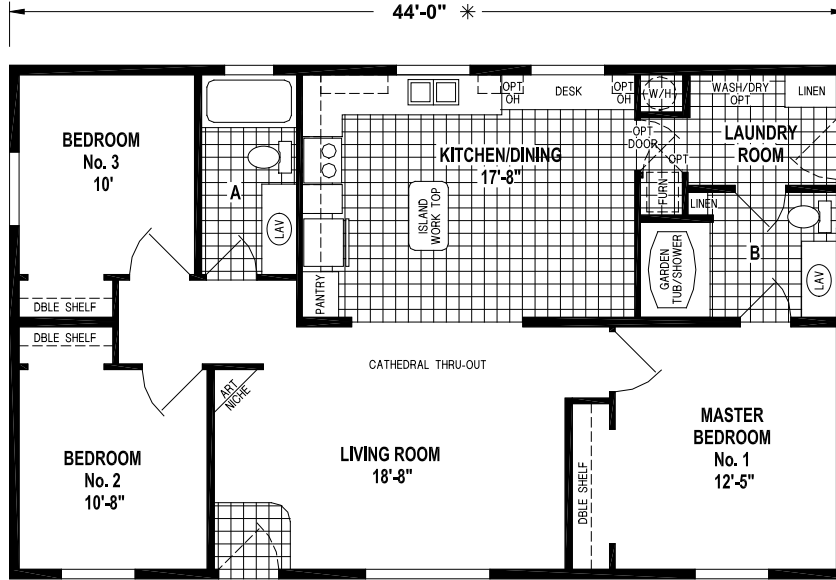
OPTION KITCHEN



ALTERNATE OPTION DEN



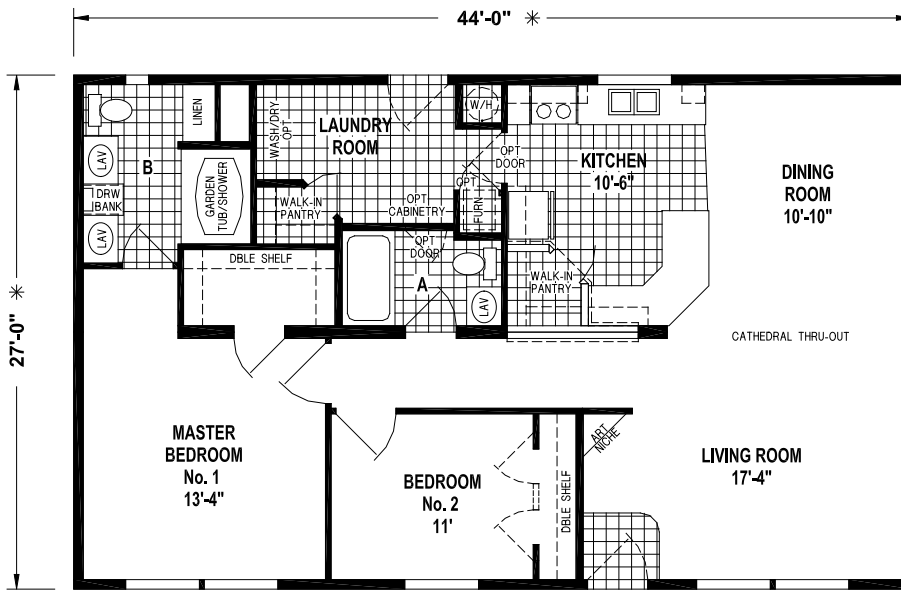
OPTION DEN



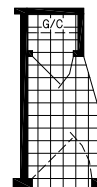
1200CT/4428 (1,188 SQ. FT.) 3BEDROOM - 2BATHS - CATHEDRAL THRU-OUT



OPTION LAUNDRY ROOM

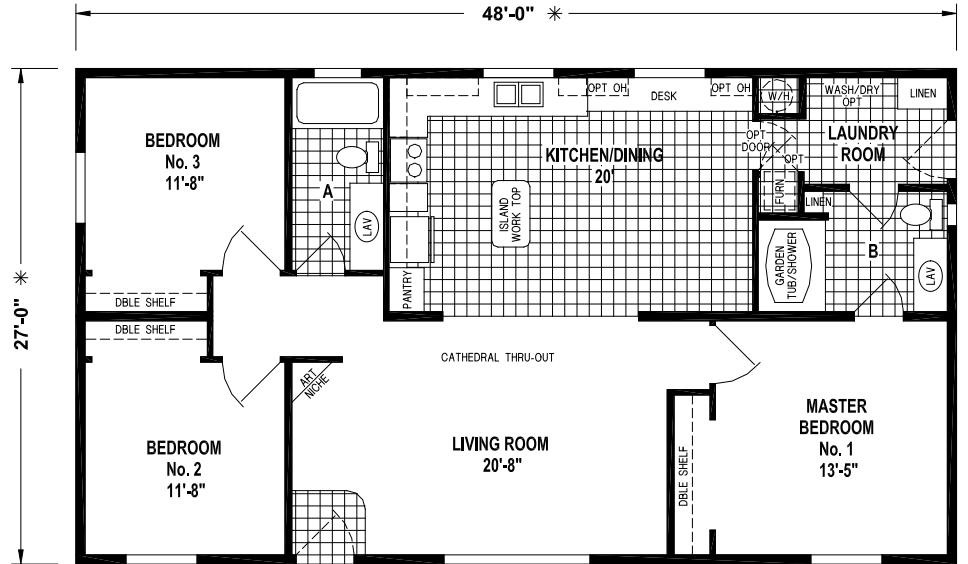
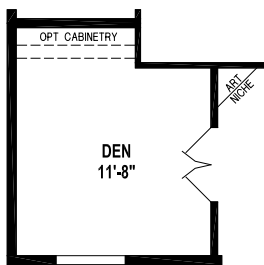
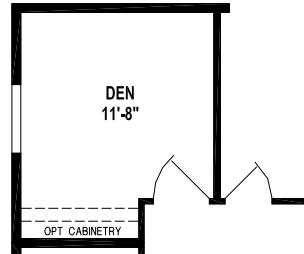
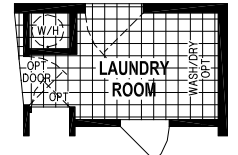
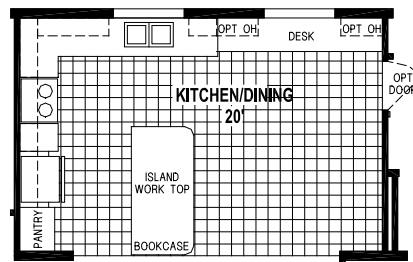


1226CTB/4428 (1,188 SQ. FT.) 2BEDROOM - 2BATHS - CATHEDRAL THRU-OUT

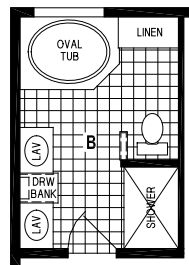
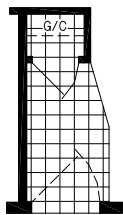


OPTION GUEST CLOSET

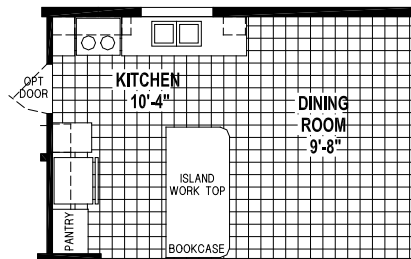
28 Series



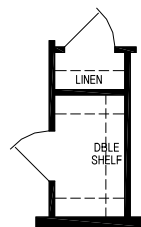
1220CT/4828 (1,296 SQ. FT.) 3BEDROOM - 2BATHS - CATHEDRAL THRU-OUT



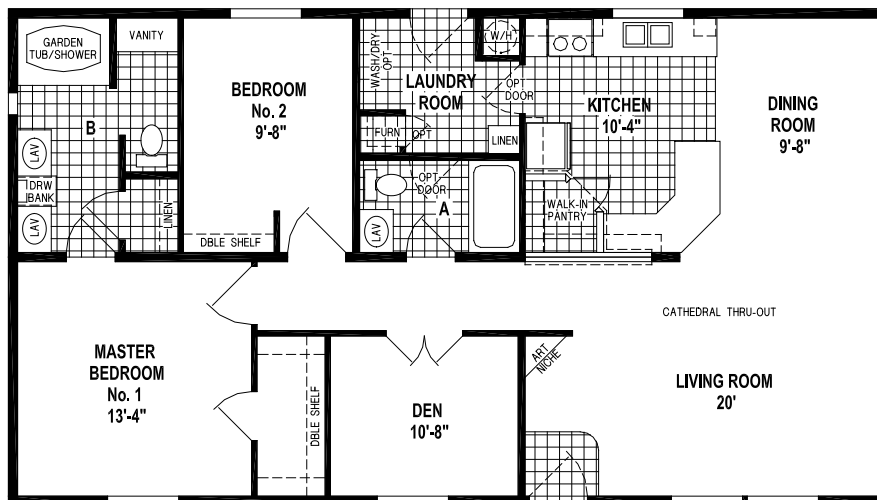
OPTION CORNER OVAL TUB BATH



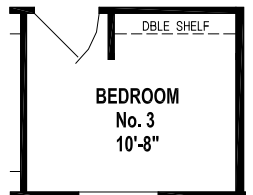
OPTION KITCHEN



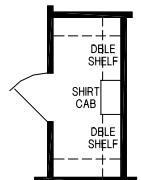
OPTION LINEN CLOSET



1227CT/4828 (1,296 SQ. FT.) 2BEDROOM - 2BATHS - CATHEDRAL THRU-OUT

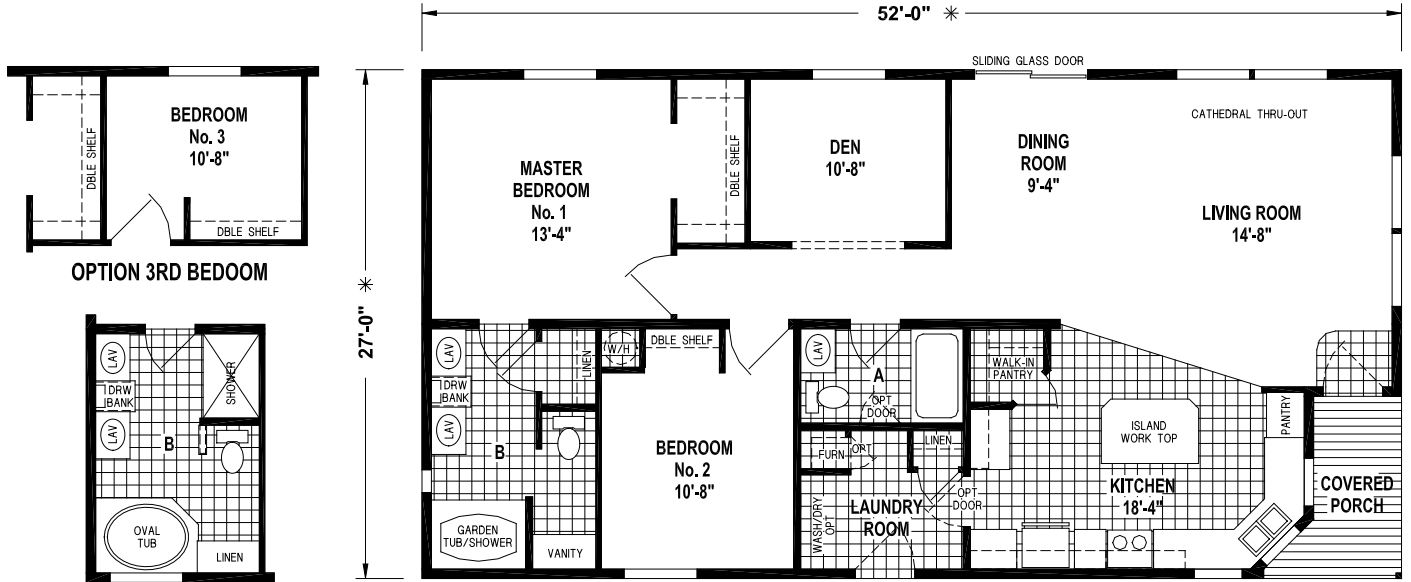


OPTION 3RD BEDROOM

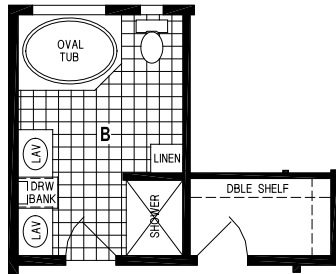


OPTION MASTER CLOSET

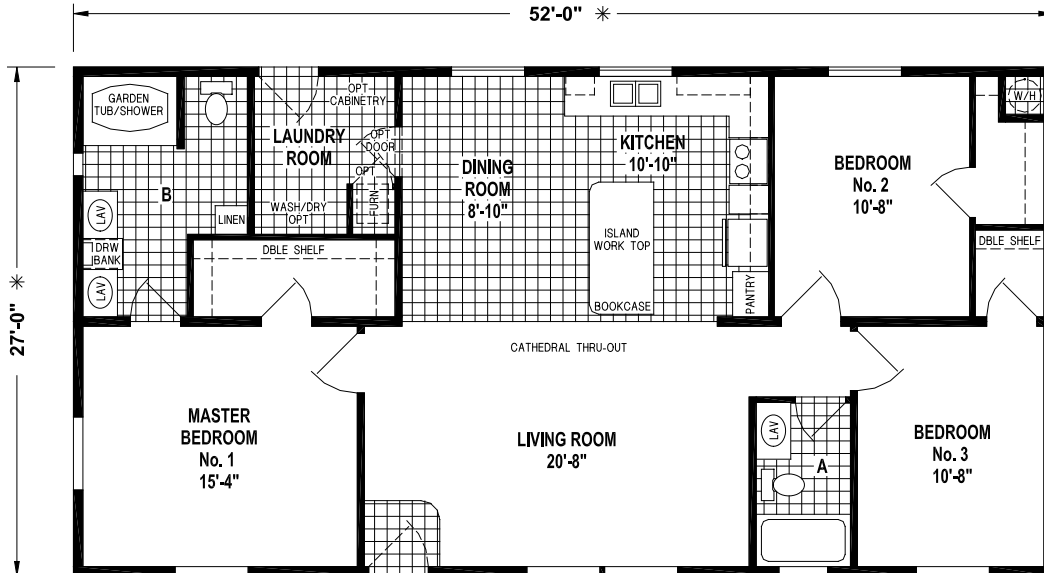
West Ridge 28 Series



1218CT/5228 (1,354 SQ. FT.) 3BEDROOM - 2BATHS - CATHEDRAL THRU-OUT

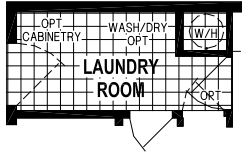


OPTION CORNER OVAL TUB BATH

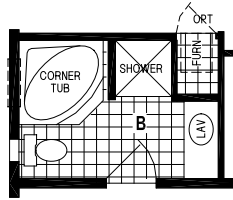


1229CT/5228 (1,404 SQ. FT.) 3BEDROOM - 2BATHS - CATHEDRAL THRU-OUT

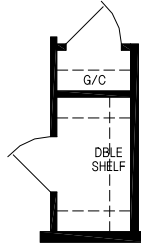
28 Series



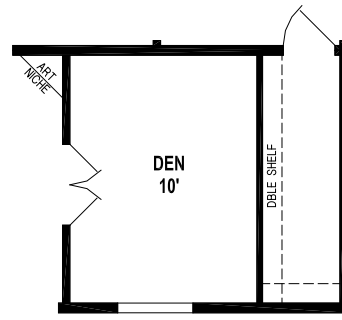
OPTION LAUNDRY ROOM



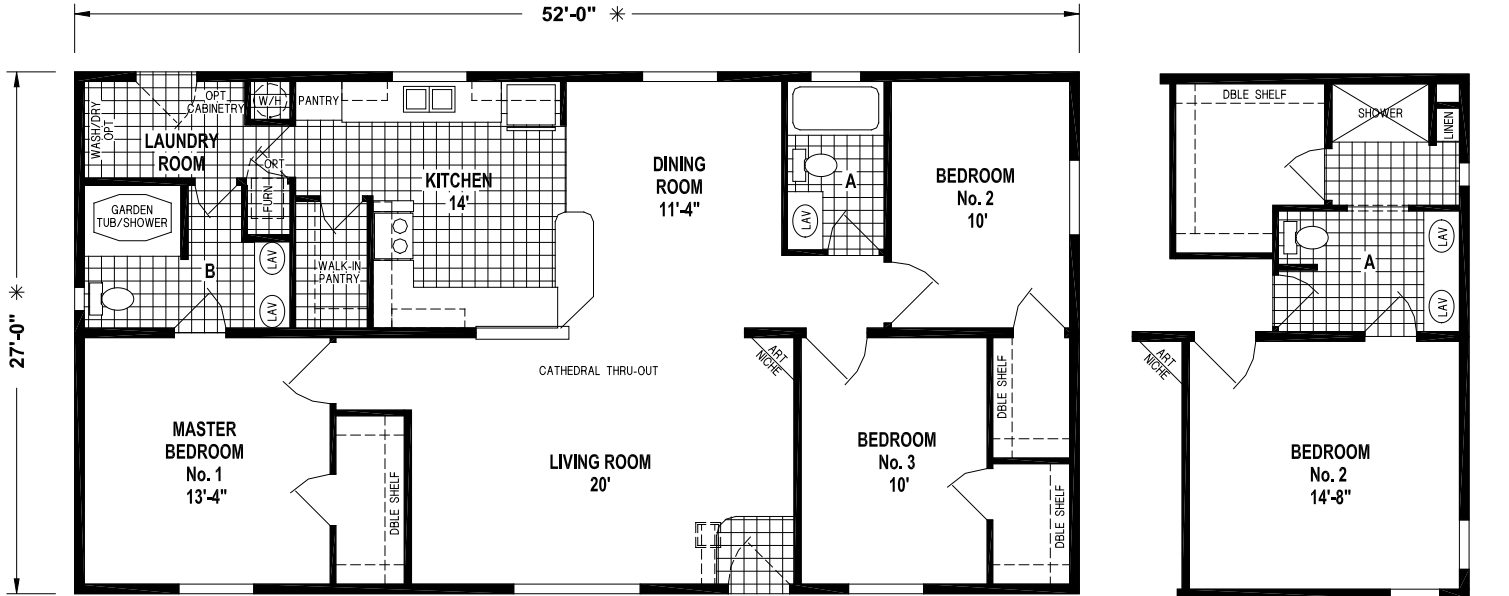
OPTION CORNER TUB BATH



OPTION GUEST CLOSET

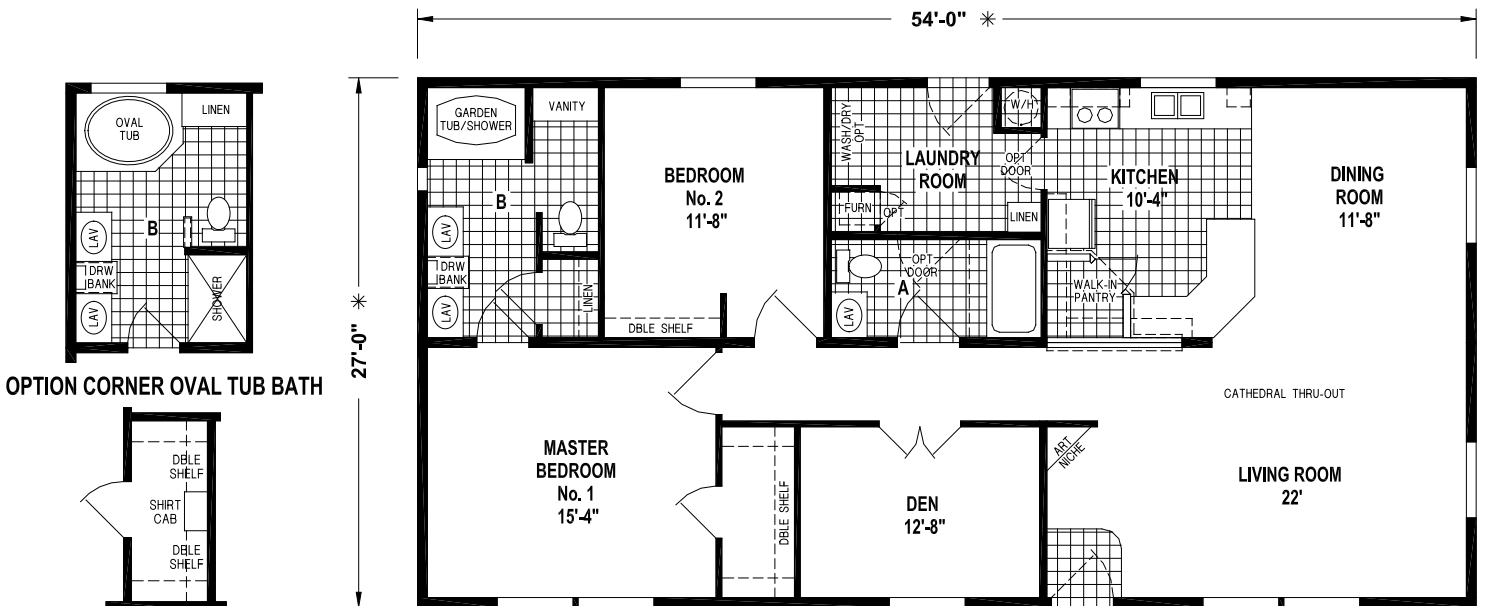


OPTION DEN

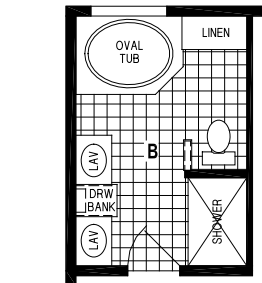


1254CT/5228 (1,404 SQ. FT.) 3BEDROOM - 2BATHS - CATHEDRAL THRU-OUT

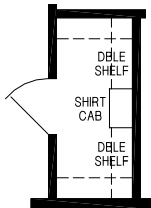
OPTION 2BEDROOM CONFIGURATION



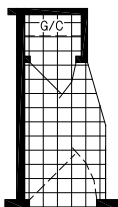
1233CT/5428 (1,458 SQ. FT.) 2BEDROOM - 2BATHS - CATHEDRAL THRU-OUT



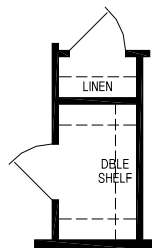
OPTION CORNER OVAL TUB BATH



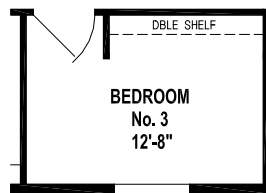
OPTION MASTER CLOSET



OPTION GUEST CLOSET



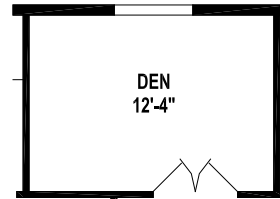
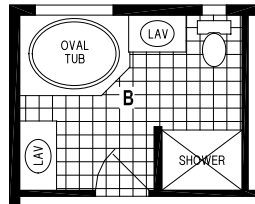
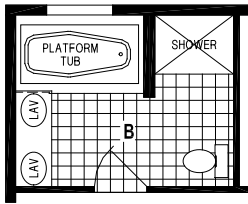
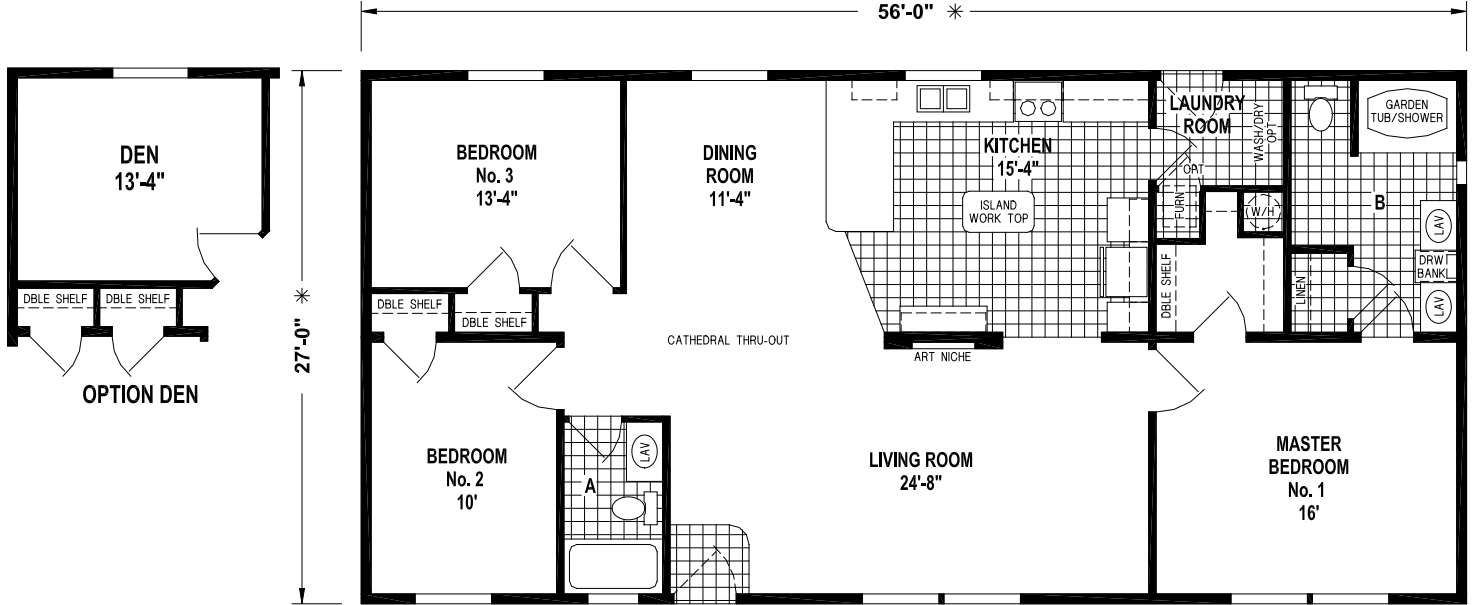
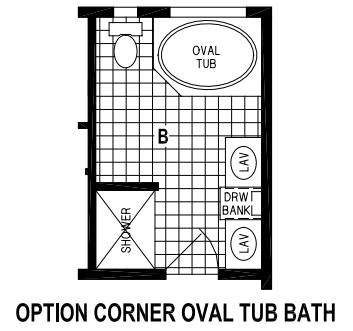
OPTION LINEN CLOSET



OPTION 3RD BEDROOM

West Ridge 28 Series

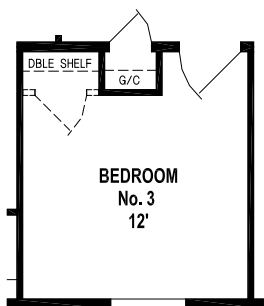
SLIDING GLASS DOOR
OPTION
DINING ROOM S.G.D.



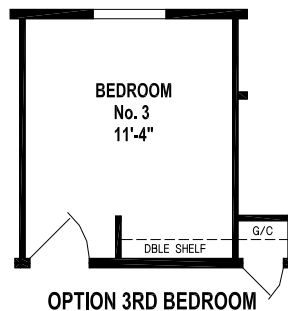
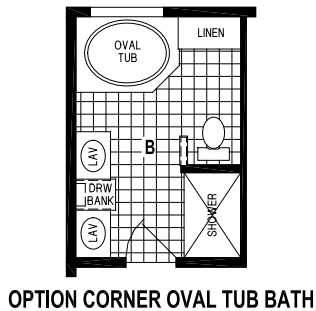
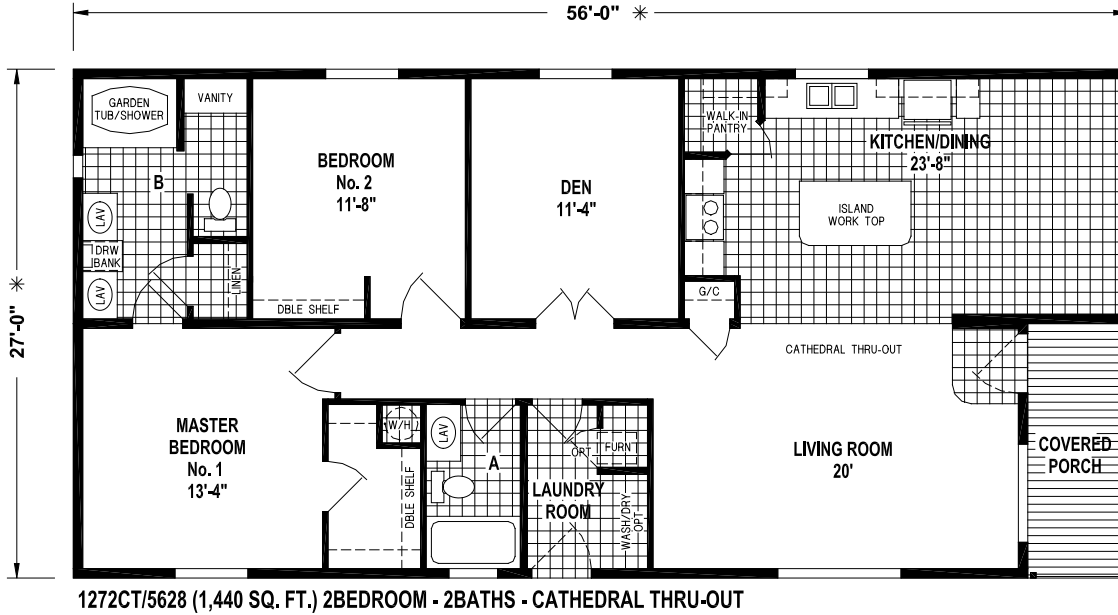
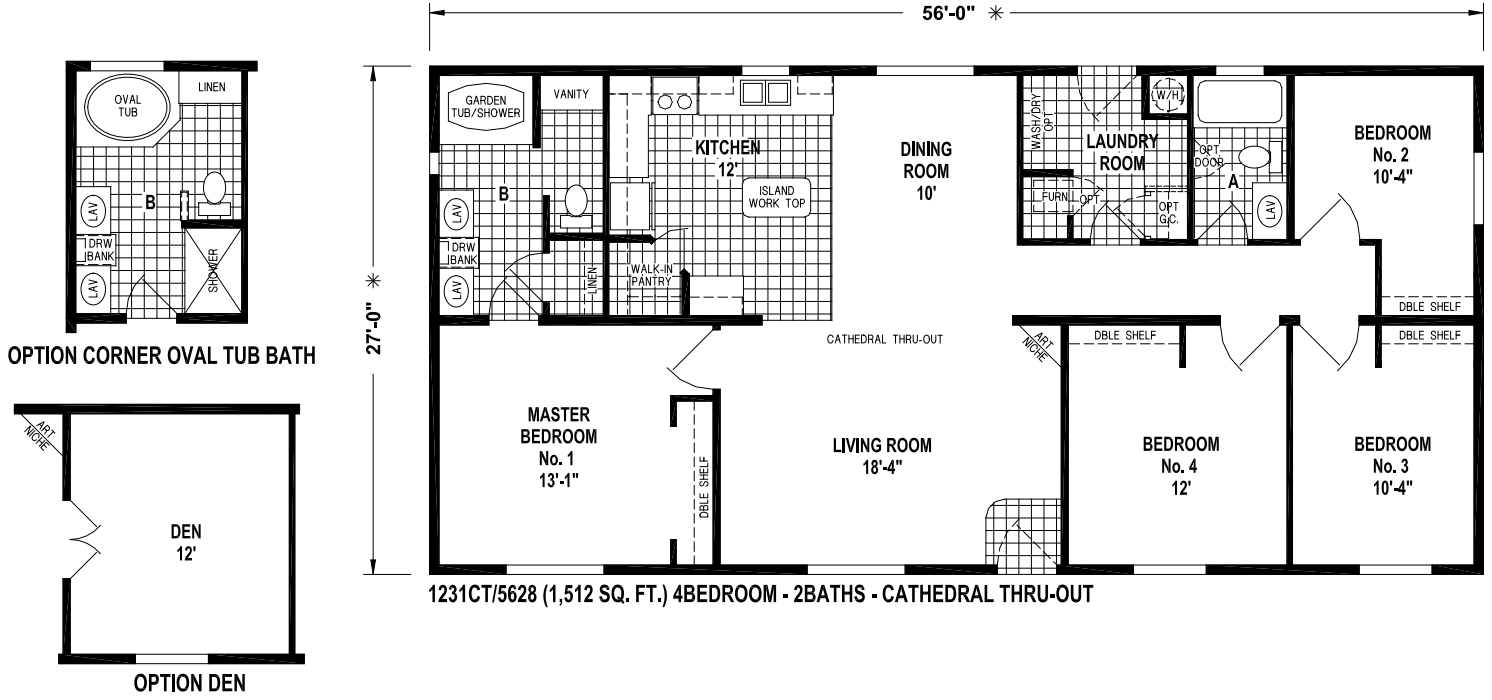
OPTION DELUXE BATH

OPTION CORNER OVAL TUB BATH

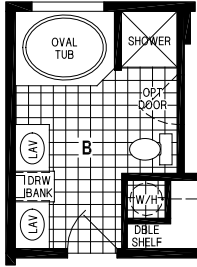
OPTION DEN



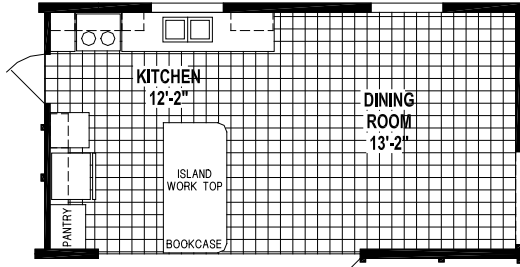
28 Series



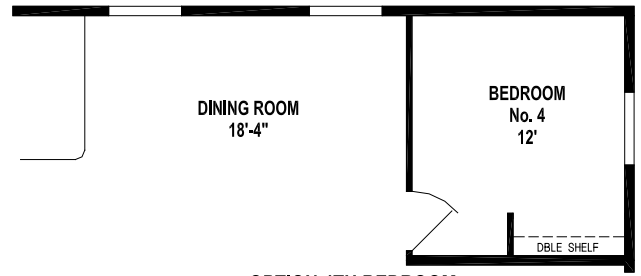
West Ridge 28 Series



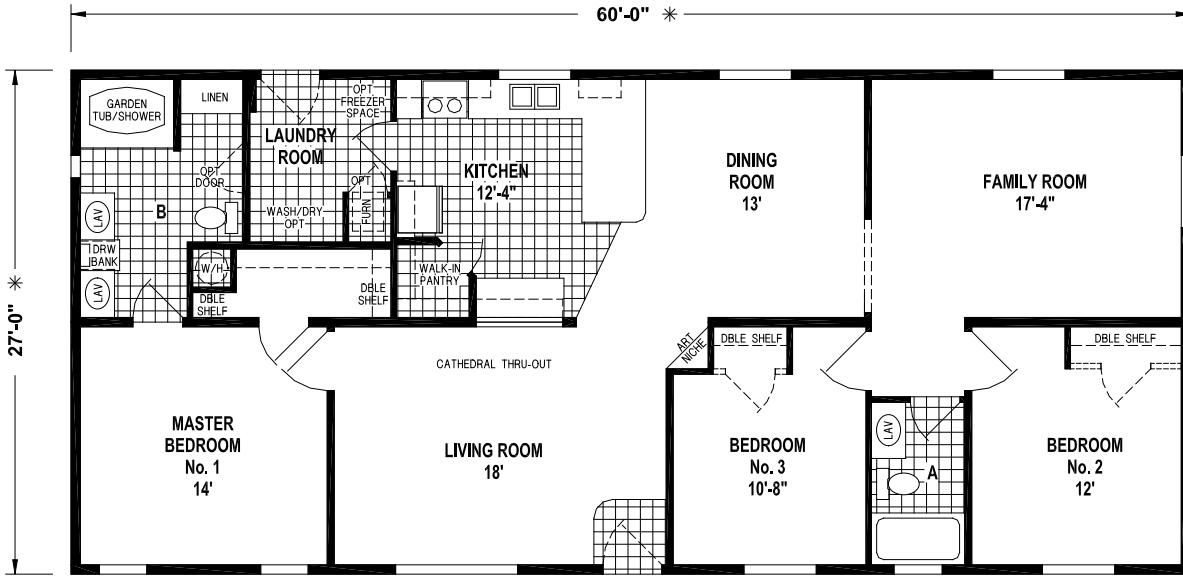
OPTION OVAL TUB BATH



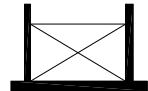
OPTION KITCHEN



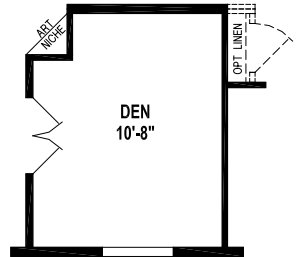
OPTION 4TH BEDROOM



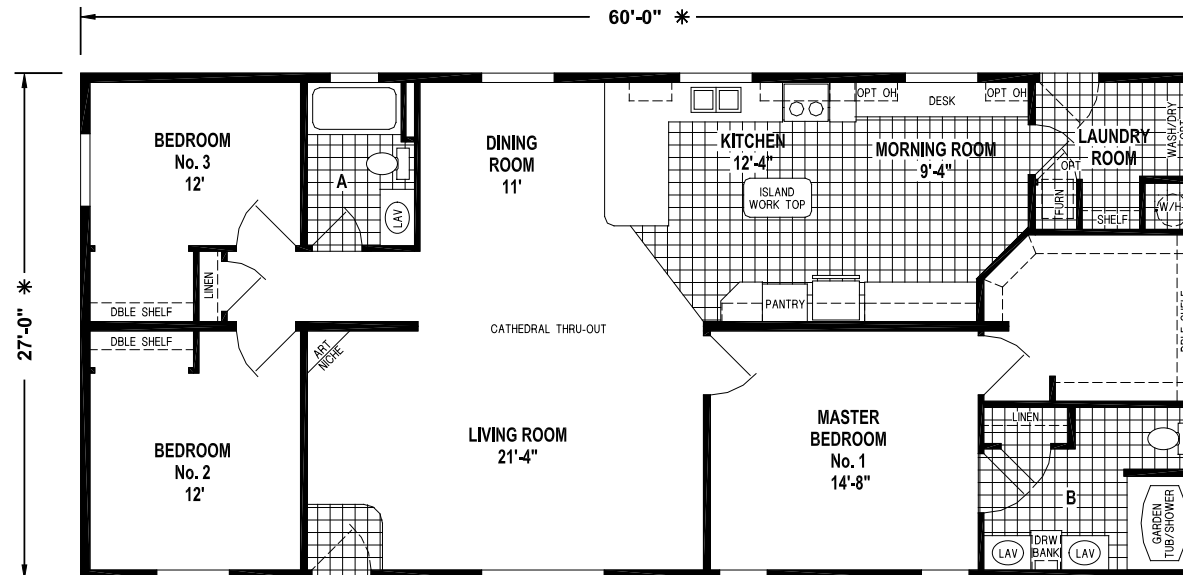
1216CT/6028 (1,620 SQ. FT.) 3BEDROOM - 2BATHS - CATHEDRAL THRU-OUT



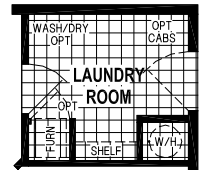
OPTION 60" SHOWER



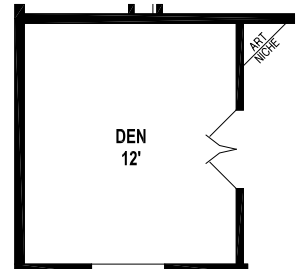
OPTION DEN



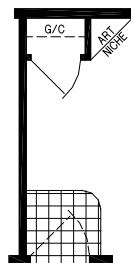
1246CT/6028 (1,620 SQ. FT.) 3BEDROOM - 2BATHS - CATHEDRAL THRU-OUT



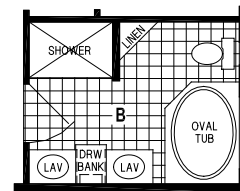
OPTION LAUNDRY ROOM



OPTION DEN

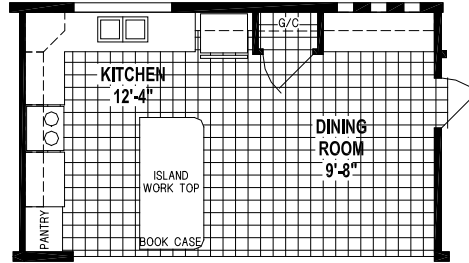


OPTION GUEST CLOSET

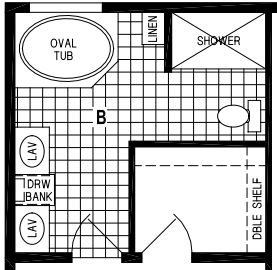


OPTION CORNER OVAL TUB BATH

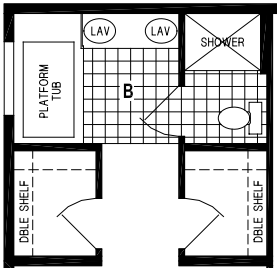
28 Series



OPTION KITCHEN



OPTION CORNER OVAL TUB BATH

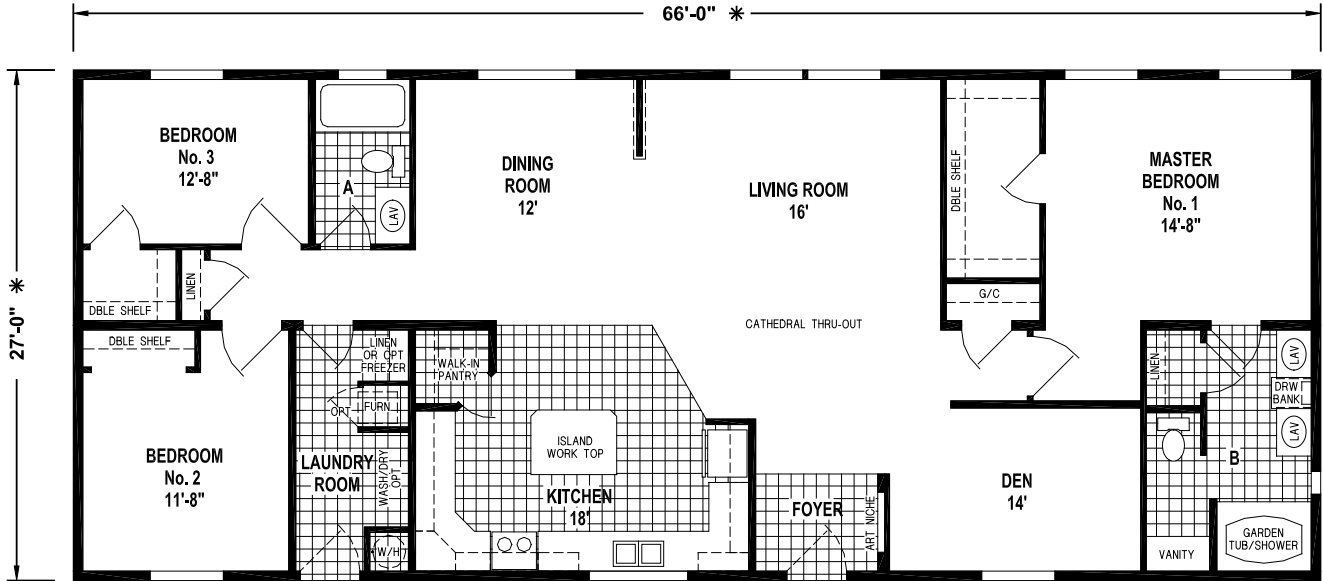


OPTION PLATFORM TUB BATH

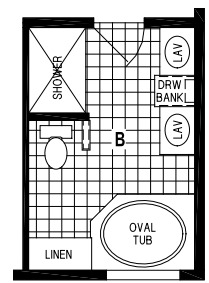
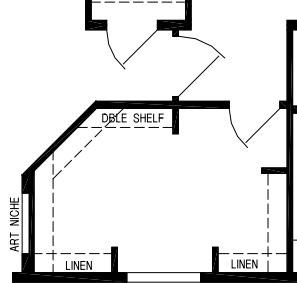
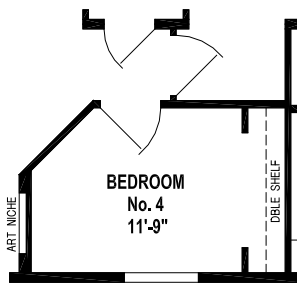
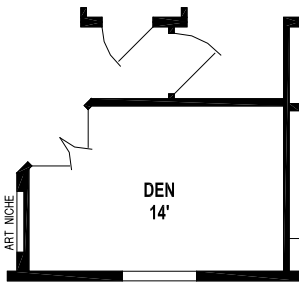
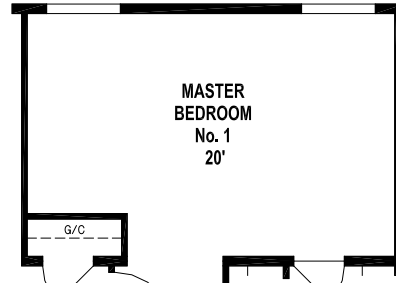
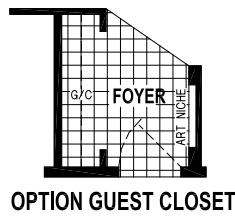


1260CT/6028 (1,605 SQ. FT.) 3BEDROOM - 3BATHS - CATHEDRAL THRU-OUT

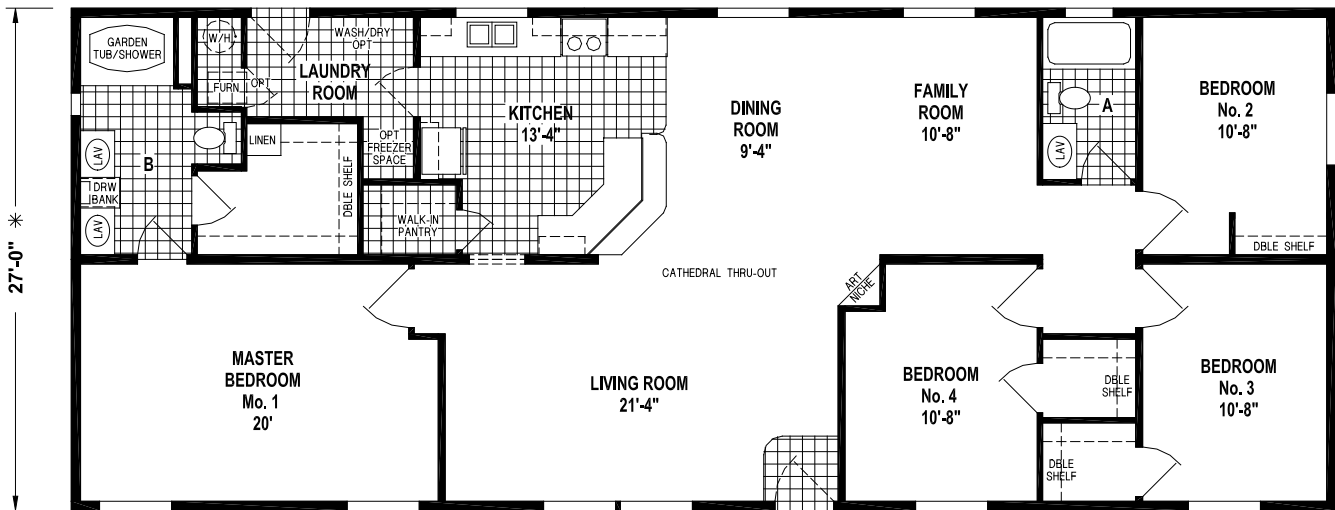
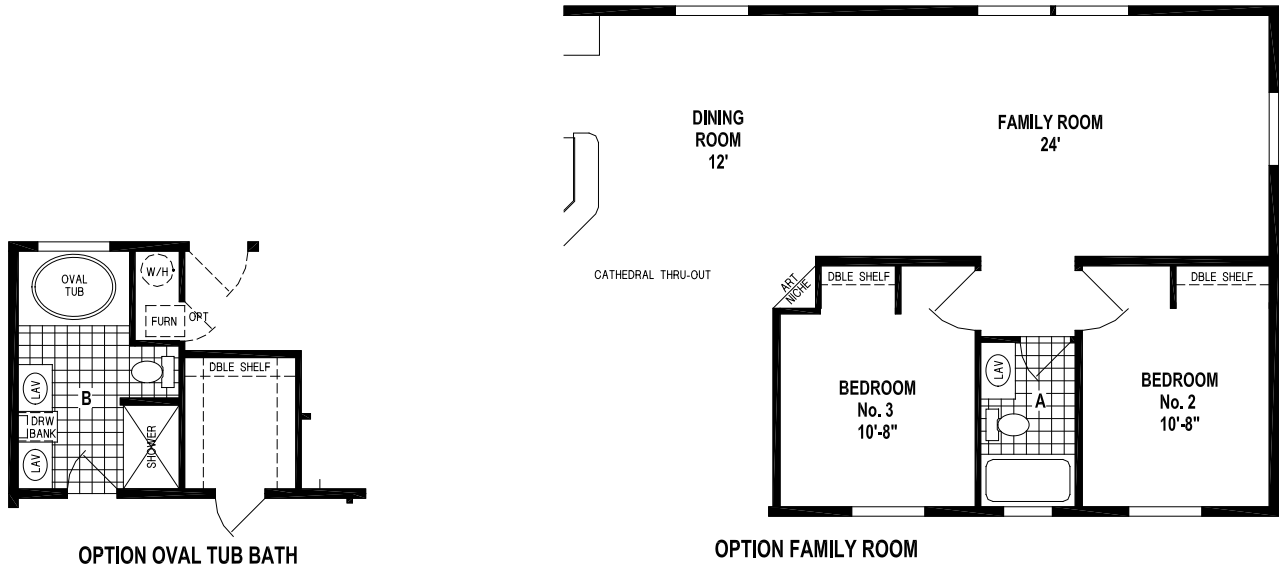
West Ridge 28 Series



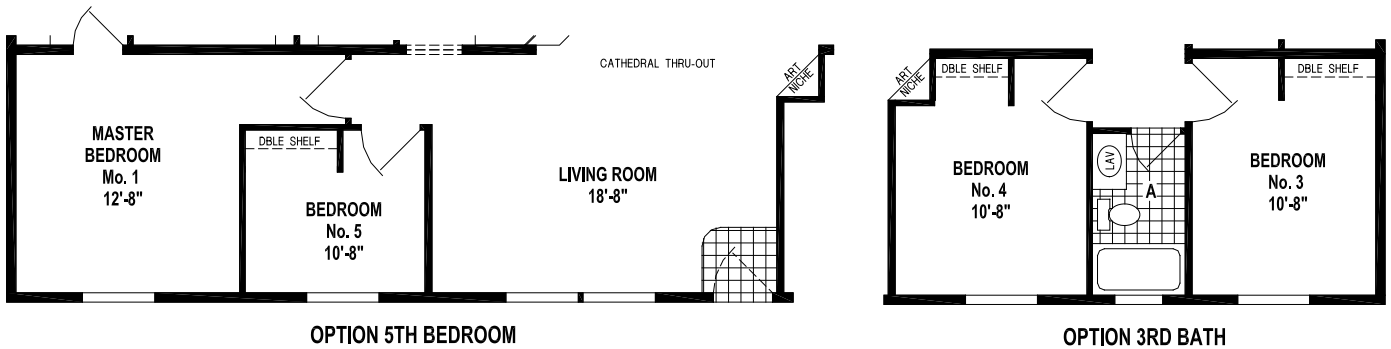
1203CT/6628 (1,782 SQ. FT.) 3BEDROOM - 2BATHS - CATHEDRAL THRU-OUT



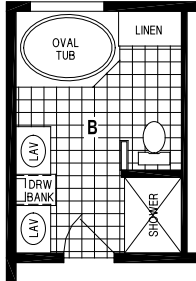
28 Series



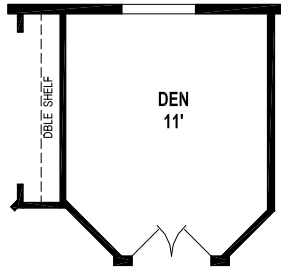
1281CT/6828 (1,836 SQ. F.T) 4BEDROOM - 2BATHS - CATHEDRAL THRU-OUT



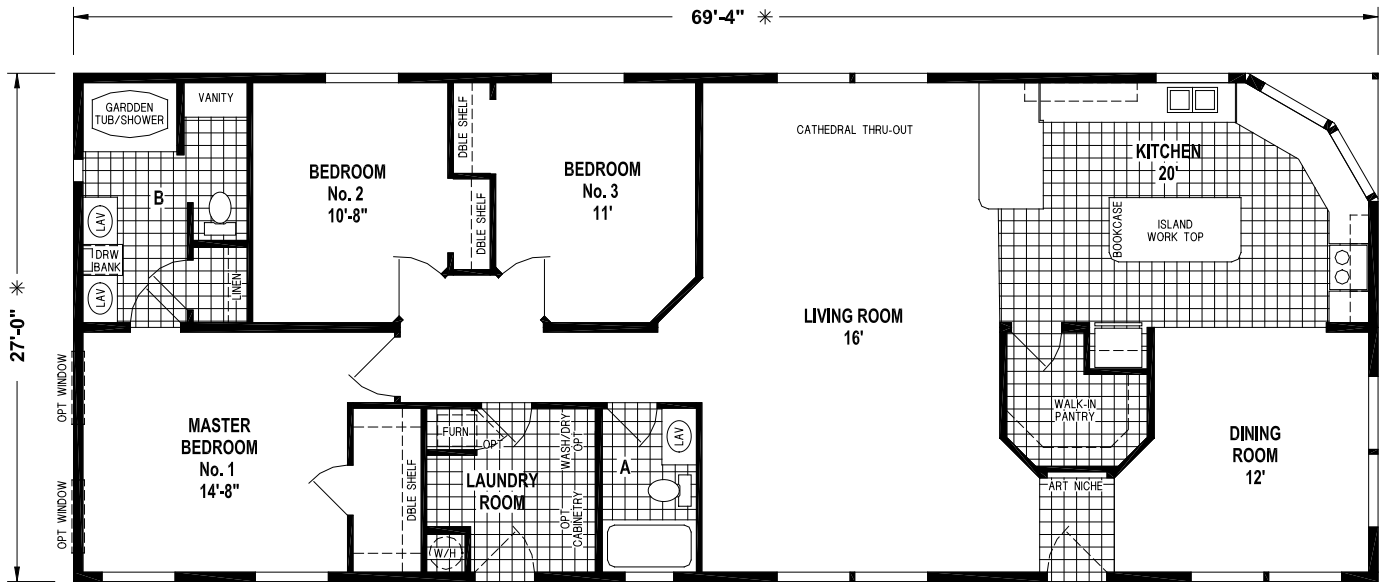
West Ridge 28 Series



OPTION CORNER OVAL TUB BATH



OPTION DEN



1288CTC/6928 (1,855 SQ. FT.) 3BEDROOM - 2BATHS - CATHEDRAL THRU-OUT

West Ridge

20/24/28/32 Series

Standard Features

Living Areas

- Your Choice of 3 Interior Paint Colors
- 52" Ceiling Fan w/Light in Living Room
- Wood Cornice Valances on All Windows Except Bathroom
- Metal Mini Blinds
- Shaw Carpet w/Rebond Pad
- Decorative Chandelier in Dining Room

Kitchen

- Your Choice of 3 Natural Hardwood Cabinets (Oak, Ebusu or Mahogany)
- Lined Overhead Cabinets w/Adjustable Shelves
- Fully Extended Drawer System w/Ball Bearing Guides
- Residential Hidden Cabinet Door Hinges
- 18 Cu. Ft. Double Door Frost Free Refrigerator
- 30" Deluxe Electric Range w/Glass Door, Clock & Timer
- Stainless Steel Sink w/Single Lever Faucet & Sprayer
- Full Backsplash Counter Top to Cabinets Throughout Kitchen
- Plumb for Ice Maker

Bathrooms

- Your Choice of 3 Natural Hardwood Cabinets (Oak, Ebusu or Mahogany)
- Natural Hardwood Trimmed Mirrors w/Tulip Lights
- 60"x42" Oval Fiberglass Tub/Shower in Master Bath
- 60" Fiberglass Tub/Shower Combo in Hall Bath
- Single Lever Faucet at Sink
- Single Lever Tub/Shower Faucet
- Residential Hidden Cabinet Door Hinges
- Power Vent Fan w/Light
- Elongated China Commodes
- China Lav Sinks
- Residential Height Bathroom Counter Tops

Bedrooms

- Shaw Carpet w/Rebond Pad
- Overhead Lights w/Separate Switch
- Double Ventilated Wire Shelving in Closets
- 36" Interior Doors w/Lever Handles
- Metal Mini Blinds

Additional Features

- Board & Batt Exterior on Front Door Side
- 10' Dormer Centered Above Front Door
- 25-Year Shingles (Fiberglass—Class A Fire Rated) Choice of Colors
- Vaulted Ceilings Throughout
- Residential Finished Drywall Throughout
- Baseboards Throughout
- 6-Panel Interior Doors w/Lever Handles
- Mortised Hinges Throughout
- Linoleum Floor at Entry
- Electric Forced Air Furnace
- Insulated Fiberglass Heat Ducts
- Perimeter Heating System Throughout w/ Toe-Kick Registers in Kitchen & Bathrooms
- 40 Gal. Electric Water Heater (Dual Element)
- Whole House Water Shut-off Valve
- Residential PEX Waterlines
- Plumb for Washer; Wire for Dryer
- Wire for Freezer per Floor Plan
- 36" 6 Panel Fiberglass Front & Rear Door w/ Deadbolts
- Energy Star Rated Low "E" Vinyl Windows
- Tongue & Groove OSB Decking
- 200 Amp Service Entrance
- 2 x 6 Sidewalls, 16" O.C.
- 2 x 6 Floor Joists, 16" O.C. (20, 24 & 28 Series)
- 2 x 8 Floor Joists, 16" O.C. (32 Series)
- 30# Roof Load
- Exterior Receptacle w/GFI Breaker
- Code Insulation (R-14 Floor, R-19 Walls & R-25 Ceiling) The Higher the "R-Value" the Greater the Insulating Power
- Wire Shelf over Washer/Dryer Area

Compare Our Features and Value to ANYONE!



SKYLINE
BRINGING AMERICA HOME. BRINGING AMERICA FUN.

Visit us at our web site at www.skylinecorp.com



For your comfort and safety, Skyline home designs are approved and inspected for conformance to Federal standards.

* Dimensions stated to industry standards. Width and length dimensions are nominal and are not to be used for setup of home on site; consult selling retailers for exact specifications. Overall length does not include approximately four foot hitch. The square footage is approximate and based upon nominal exterior floor size. Room sizes are measured from floor ends and wall centers.

Because of progressive product improvement, all prices & specifications are subject to change without prior notice or obligation to Skyline Corporation.

Your Retailer, an independent contractor, who is not an agent of Skyline Corporation, is the party responsible for your purchase contract and any additions, deletions, alterations, or attachments made to or in your home.